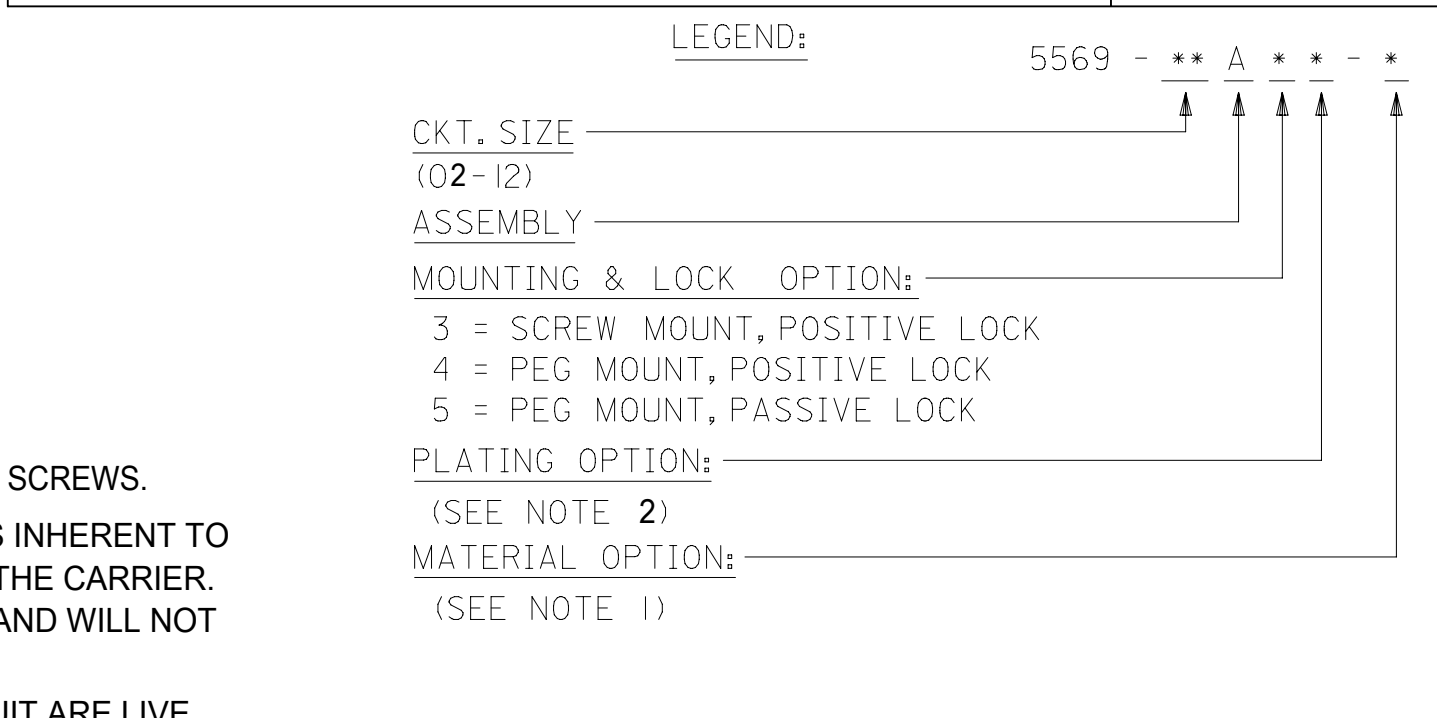
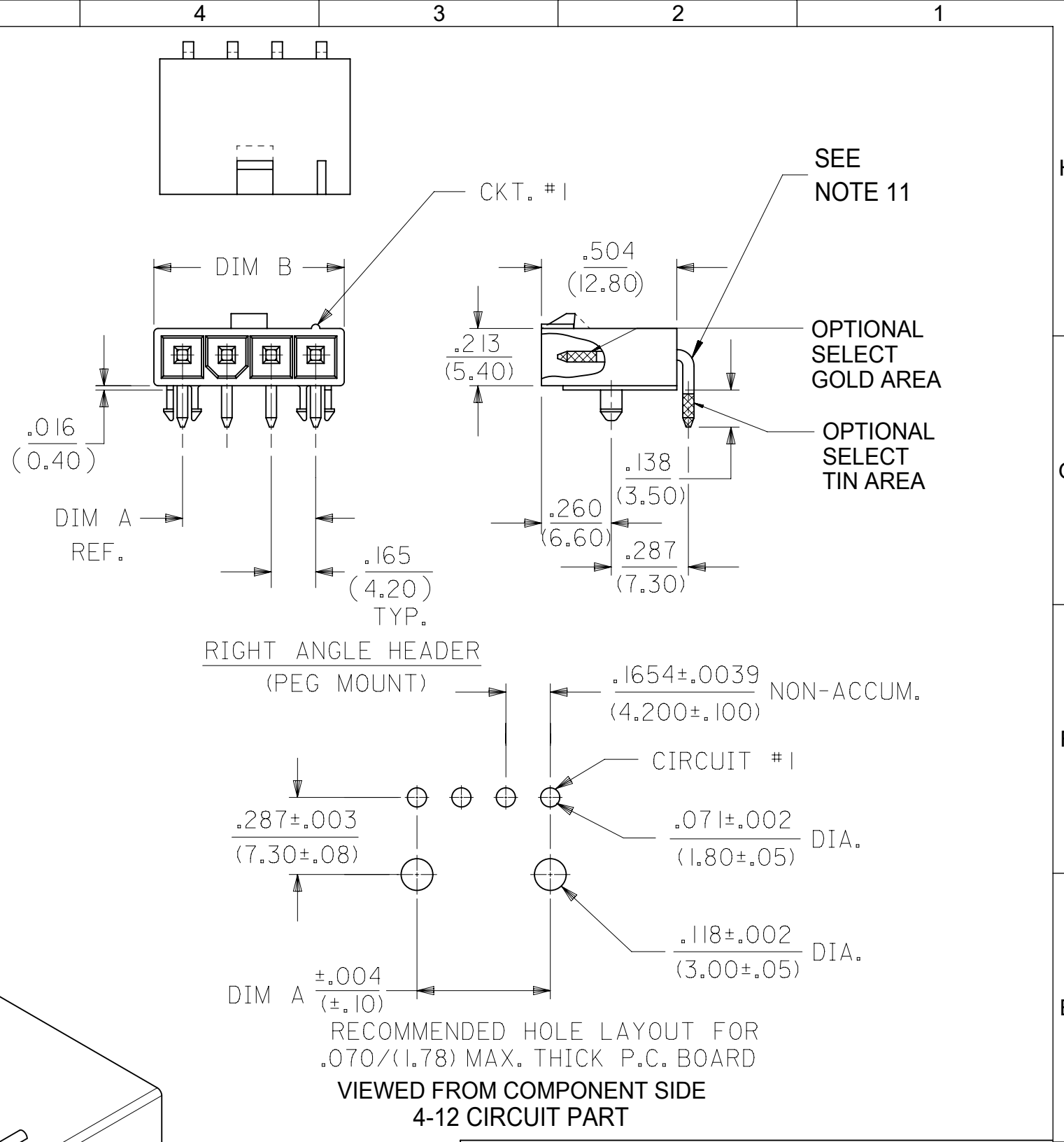
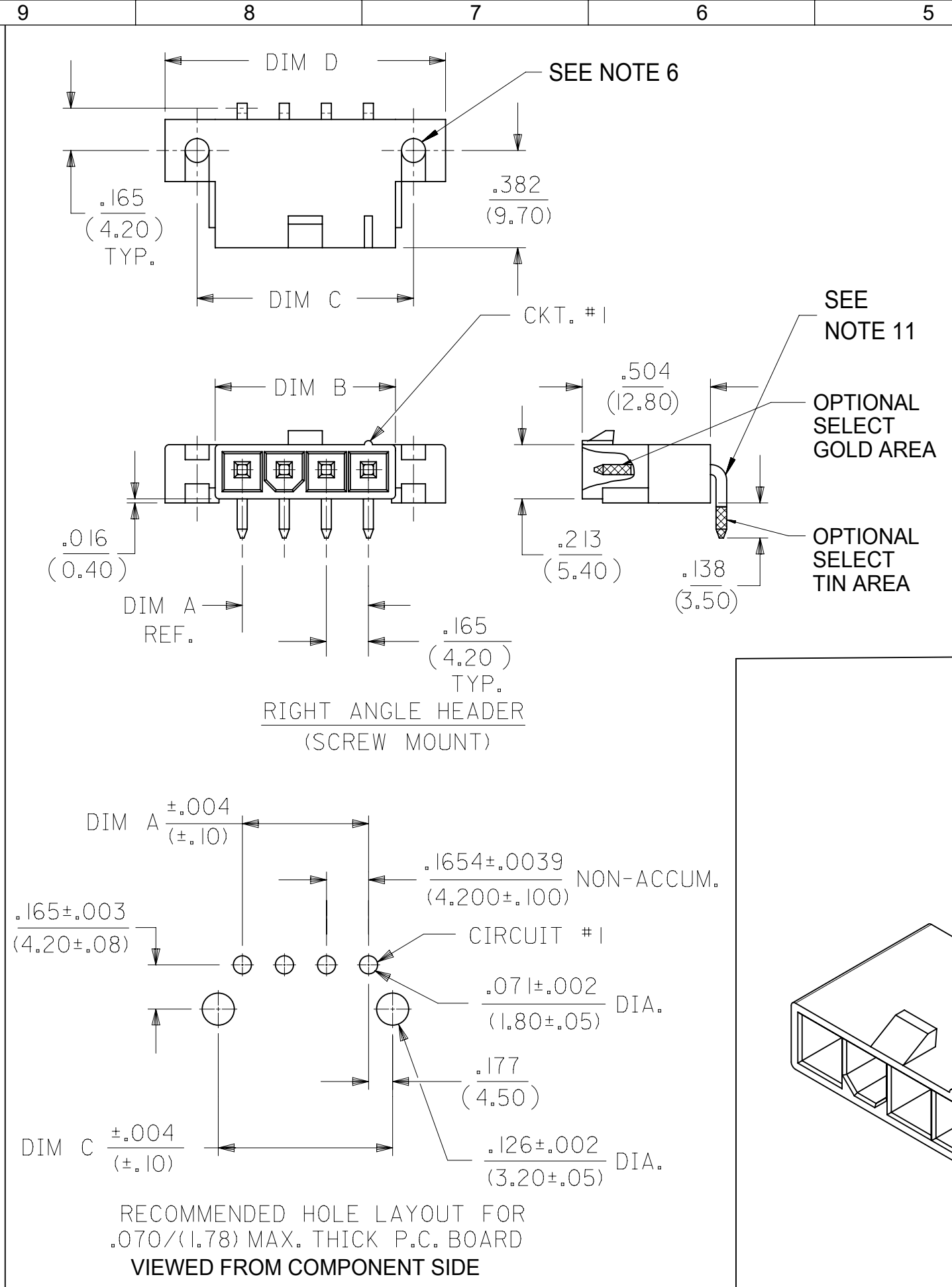


| CKT SIZE | DIM A | DIM B | DIM C | DIM D |
|----------|------------------|------------------|------------------|------------------|
| 2 | .165 (4.20) | .378 (9.60) | .520 (13.20) | .772 (19.60) |
| 4 | .496 (12.60) | .709 (18.00) | .850 (21.60) | 1.102 (28.00) |
| 5 | .661 (16.80) | .874 (22.20) | 1.016 (25.80) | 1.268 (32.20) |
| 6 | .827 (21.00) | 1.039 (26.40) | 1.181 (30.00) | 1.433 (36.40) |
| 7 | .992 (25.20) | 1.205 (30.60) | 1.346 (34.20) | 1.598 (40.60) |
| 8 | 1.157 (29.40) | 1.370 (34.80) | 1.512 (38.40) | 1.764 (44.80) |
| 9 | 1.323 (33.60) | 1.535 (39.00) | 1.677 (42.60) | 1.929 (49.00) |
| 10 | 1.488 (37.80) | 1.701 (43.20) | 1.843 (46.80) | 2.094 (53.20) |
| 11 | 1.654 (42.00) | 1.866 (47.40) | 2.008 (51.00) | 2.260 (57.40) |
| 12 | 1.819 (46.20) | 2.031 (51.60) | 2.173 (55.20) | 2.425 (61.60) |

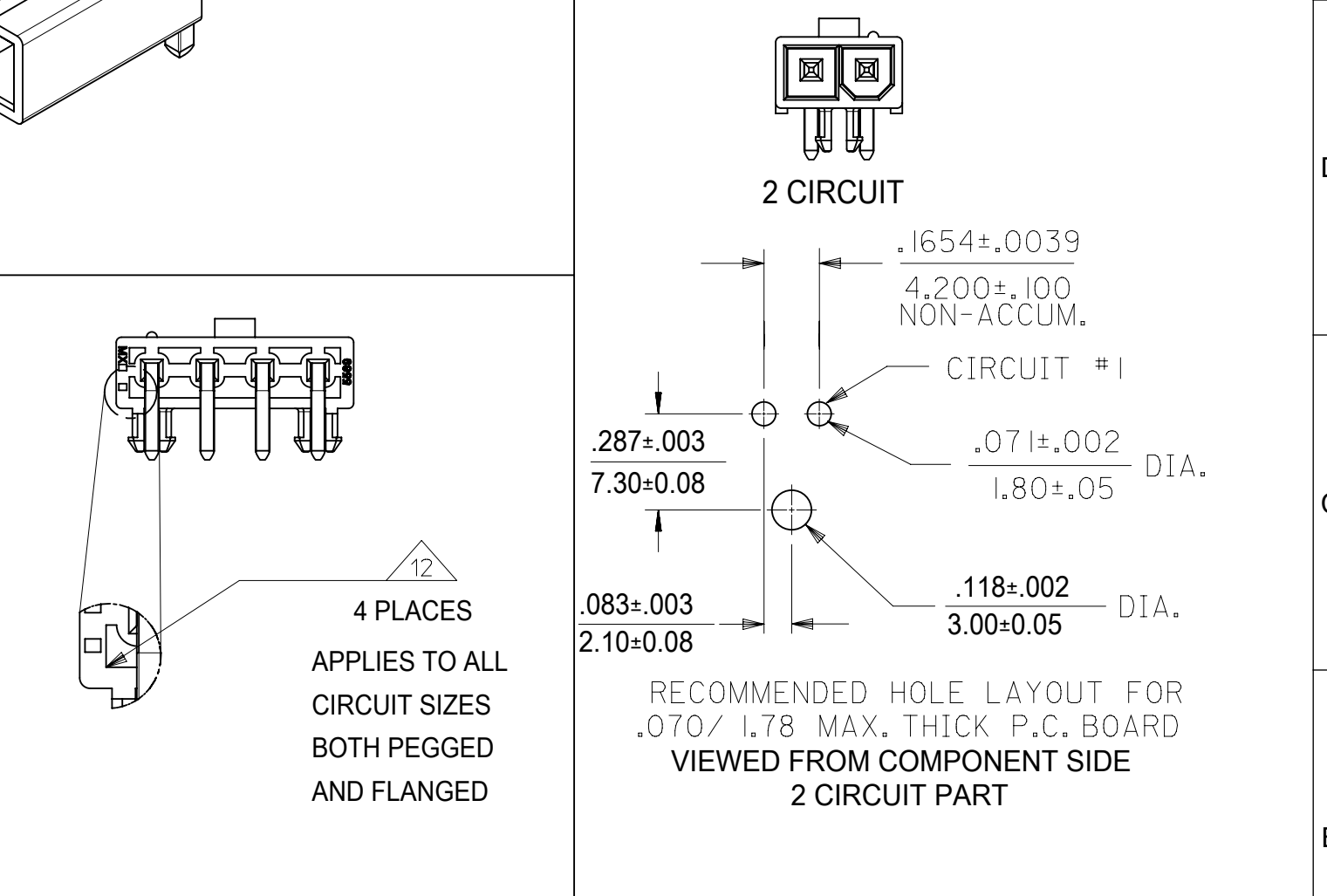
NOTES:

- HOUSING MATERIAL:
 "BLANK" = NYLON 6/6, U.L. 94V-2, COLOR: NATURAL.
 210 = NYLON 6/6, U.L. 94V-0, COLOR: NATURAL.
 BL = NYLON 6/6, U.L. 94V-2, COLOR: BLACK.
 400 = NYLON 6/6, U.L. 94V-O. COLOR: BLACK.
 TERMINAL MATERIAL: BRASS, ALLOY.
- TERMINAL PLATING:
 G, GS - .000030/(.00076) MIN. SELECT GOLD AND .000100/(.00127) MIN. SELECT MATTE TIN OVER .000050/(.00127) MIN NICKEL OVERALL.
 G2, GS2 - .00015/(.00038) MIN. SELECT GOLD AND .000100/(.00254) MIN. SELECT MATTE TIN OVER .000050/(.00127) MIN. NICKEL OVERALL.
 RM - .000060/(.00152) MIN REFLOWED MATTE TIN OVER .000050/(.00127) MIN. NICKEL OVERALL.
 BLANK, S, MS - .000100/(.00254) MIN. MATTE TIN OVER .000050/(.00127) MIN. NICKEL OVERALL.
- PRODUCT SPECIFICATION: PS-5556-001
- PACKAGING SPECIFICATION : BULK PACK PER PK-5569-002 TRAY PACK PER PK-5569-005
- PART MATES WITH MOLEX RECEPTACLE #5557.
- PART IS DESIGNED FOR USE WITH #4 OR M3 SELF TAPPING SCREWS.
- DISCOLORATION IN THE BANDOLIER CARRIER AREA OF THE PIN IS INHERENT TO THE PLATING PROCESS AND IS DUE TO THE MASKING EFFECT OF THE CARRIER. THIS DISCOLORATION IS IN A NON-FUNCTIONAL AREA OF THE PIN AND WILL NOT AFFECT THE PERFORMANCE OF THE HEADER ASSEMBLY.
- CONNECTORS ARE NOT TO BE MATED OR UNMATED WHILE CIRCUIT ARE LIVE.
- PARTS NOT DESIGNED FOR CURRENT SHARING.
- PART CONFORMS TO CLASS "B" REQUIREMENTS OF COSMETIC SPECIFICATION PS-45499-002.
- FORMING MARKS ON PINS ARE ACCEPTABLE
- CORNER CORE-OUTS ARE OPTIONAL AND MAY OR MAY NOT BE PRESENT.
- TEXT ON PART IS FOR REFERENCE ONLY. TEXT AND TEXT LOCATION MAY VARY DEPENDING ON PART NUMBER AND/OR TOOL.



LEGEND:

- 5569 - ** A * * - *
- CKT. SIZE _____
- (02-12)
- ASSEMBLY _____
- MOUNTING & LOCK OPTION: _____
- 3 = SCREW MOUNT, POSITIVE LOCK
- 4 = PEG MOUNT, POSITIVE LOCK
- 5 = PEG MOUNT, PASSIVE LOCK
- PLATING OPTION: _____
- (SEE NOTE 2)
- MATERIAL OPTION: _____
- (SEE NOTE 1)



| | | | | | | | | | |
|---|--|------------------------|--|-------------------|--|---------------------------|--|-----------------|--|
| THIS DRAWING CONTAINS INFORMATION THAT IS PROPRIETARY TO MOLEX ELECTRONIC TECHNOLOGIES, LLC AND SHOULD NOT BE USED WITHOUT WRITTEN PERMISSION | | | | | | | | | |
| DIMENSION UNITS | | SCALE | | CURRENT REV DESC: | | | | | |
| IN/MM | | NTS | | | | | | | |
| GENERAL TOLERANCES (UNLESS SPECIFIED) | | | | | | | | | |
| | | MM | | INCH | | | | | |
| 4 PLACES | | ± | | ± | | EC NO: 728634 | | | |
| 3 PLACES | | ± | | ± 0.015 | | DRWN: JERRYW8 2022/11/15 | | | |
| 2 PLACES | | ± 0.38 | | ± | | CHK'D: XQZHANG 2022/11/16 | | | |
| 1 PLACE | | ± | | ± | | APPR: XQZHANG 2022/11/16 | | | |
| 0 PLACES | | ± | | ± | | INITIAL REVISION: | | | |
| ANGULAR TOL | | ± 3.0 ° | | ± | | DRWN: KSS 2/14/89 | | | |
| DRAFT WHERE APPLICABLE MUST REMAIN WITHIN DIMENSIONS | | THIRD ANGLE PROJECTION | | DRAWING | | SERIES | | MATERIAL NUMBER | |
| | | C-SIZE | | 5569 | | SEE CHARTS | | CUSTOMER | |
| | | | | | | | | GENERAL MARKET | |
| | | | | | | | | SHEET NUMBER | |
| | | | | | | | | 1 OF 2 | |

| | | | |
|-----------------|----|--------------|---------------------|
| DOCUMENT STATUS | P1 | RELEASE DATE | 2022/11/16 09:25:17 |
|-----------------|----|--------------|---------------------|

THIS DRAWING REPLACES DRAWING SDA-5569-NL*

| UL94V-2 | | | | | | | |
|----------------------------------|--------------|-----------|-----------------|-------------|----------------------|---------------------|------------------|
| E.D.P. NO. | ENG. NO. | CKT. SIZE | MOUNTING OPTION | LOCK OPTION | PLATING (SEE NOTE 2) | MAT'L. (SEE NOTE 1) | PACKAGING OPTION |
| SCREW MOUNT POSITIVE LOCK | | | | | | | |
| 39-30-3041 | 5569-04A3MS | 4 | SCREWS | POSITIVE | TIN/NICKEL | 94V-2 | BULK |
| 39-30-3051 | 5569-05A3MS | 5 | SCREWS | POSITIVE | TIN/NICKEL | 94V-2 | BULK |
| 39-30-3043 | 5569-04A3GS | 4 | SCREWS | POSITIVE | 30 GOLD | 94V-2 | BULK |
| 39-30-3053 | 5569-05A3GS | 5 | SCREWS | POSITIVE | 30 GOLD | 94V-2 | BULK |
| PEG MOUNT POSITIVE LOCK | | | | | | | |
| 39-30-3045 | 5569-04A4 | 4 | PEGS | POSITIVE | TIN/NICKEL | 94V-2 | BULK |
| 39-30-3055 | 5569-05A4 | 5 | PEGS | POSITIVE | TIN/NICKEL | 94V-2 | BULK |
| 46999-0709 | 5569-02A4G | 2 | PEGS | POSITIVE | 30 GOLD | 94V-2 | TRAY |
| 39-30-3047 | 5569-04A4G | 4 | PEGS | POSITIVE | 30 GOLD | 94V-2 | BULK |
| 39-30-3057 | 5569-05A4G | 5 | PEGS | POSITIVE | 30 GOLD | 94V-2 | BULK |
| 46999-0710 | 5569-06A4G | 6 | PEGS | POSITIVE | 30 GOLD | 94V-2 | TRAY |
| 46999-0713 | 5569-02A4MS | 2 | PEGS | POSITIVE | TIN/NICKEL | 94V-2 | TRAY |
| 46999-0100 | 5569-05A4MS | 5 | PEGS | POSITIVE | TIN/NICKEL | 94V-2 | BULK |
| 46999-0714 | 5569-06A4MS | 6 | PEGS | POSITIVE | TIN/NICKEL | 94V-2 | TRAY |
| 46999-0098 | 5569-05A4RM | 5 | PEGS | POSITIVE | REFLOW/NICKEL | 94V-2 | BULK |
| PEG MOUNT, PASSIVE LOCK | | | | | | | |
| NO E.D.P. | 5569-04A5MS | 4 | PEGS | PASSIVE | TIN/NICKEL | 94V-2 | BULK |
| 15-24-1501 | 5569-05A5MS | 5 | PEGS | PASSIVE | TIN/NICKEL | 94V-2 | BULK |
| NO E.D.P. | 5569-04A5GS2 | 4 | PEGS | PASSIVE | 15 GOLD | 94V-2 | BULK |
| 15-27-1501 | 5569-05A5GS2 | 5 | PEGS | PASSIVE | 15 GOLD | 94V-2 | BULK |

| UL94V-0 | | | | | | | |
|----------------------------------|-------------------|-----------|-----------------|-------------|----------------------|---------------------|------------------|
| E.D.P. NO. | ENG. NO. | CKT. SIZE | MOUNTING OPTION | LOCK OPTION | PLATING (SEE NOTE 2) | MAT'L. (SEE NOTE 1) | PACKAGING OPTION |
| SCREW MOUNT POSITIVE LOCK | | | | | | | |
| 50-30-4469 | 5569-04A3MS-210 | 4 | SCREW | POSITIVE | TIN/NICKEL | 94V-0 | BULK |
| NO E.D.P. | 5569-05A3MS-210 | 5 | SCREW | POSITIVE | TIN/NICKEL | 94V-0 | BULK |
| NO E.D.P. | 5569-04A3GS-210 | 4 | SCREW | POSITIVE | 30 GOLD | 94V-0 | BULK |
| NO E.D.P. | 5569-05A3GS-210 | 5 | SCREW | POSITIVE | 30 GOLD | 94V-0 | BULK |
| PEG MOUNT POSITIVE LOCK | | | | | | | |
| 46999-0703 | 5569-02A4MS-210 | 2 | PEGS | POSITIVE | TIN/NICKEL | 94V-0 | TRAY |
| 39-30-3046 | 5569-04A4MS-210 | 4 | PEGS | POSITIVE | TIN/NICKEL | 94V-0 | BULK |
| 39-30-3056 | 5569-05A4MS-210 | 5 | PEGS | POSITIVE | TIN/NICKEL | 94V-0 | BULK |
| 39-30-3054 | 5569-05A4MS-210-T | 5 | PEGS | POSITIVE | TIN/NICKEL | 94V-0 | TRAY |
| 46999-0704 | 5569-06A4MS-210 | 6 | PEGS | POSITIVE | TIN/NICKEL | 94V-0 | TRAY |
| 46999-0711 | 5569-02A4G-210 | 2 | PEGS | POSITIVE | 30 GOLD | 94V-0 | TRAY |
| 39-30-3048 | 5569-04A4G-210 | 4 | PEGS | POSITIVE | 30 GOLD | 94V-0 | BULK |
| 39-30-3058 | 5569-05A4G-210 | 5 | PEGS | POSITIVE | 30 GOLD | 94V-0 | BULK |
| 46999-0712 | 5569-06A4G-210 | 6 | PEGS | POSITIVE | 30 GOLD | 94V-0 | TRAY |
| 46999-0432 | 5569-04A4GS-400 | 4 | PEGS | POSITIVE | 30 GOLD | 94V-0 | BULK |
| 50-30-4436 | 5569-05A4GS-400 | 5 | PEGS | POSITIVE | 30 GOLD | 94V-0 | BULK |
| 46999-0707 | 5569-02A4MS-400 | 2 | PEGS | POSITIVE | TIN/NICKEL | 94V-0 | TRAY |
| 46999-0288 | 5569-04A4MS-400 | 4 | PEGS | POSITIVE | TIN/NICKEL | 94V-0 | BULK |
| 46999-0289 | 5569-05A4MS-400 | 5 | PEGS | POSITIVE | TIN/NICKEL | 94V-0 | BULK |
| 46999-0708 | 5569-06A4MS-400 | 6 | PEGS | POSITIVE | TIN/NICKEL | 94V-0 | TRAY |

| | | | | | | | |
|------------------------|--------------|------------|----------|--|--|--|--|
| DOCUMENT STATUS | | | | | | | |
| P1 | RELEASE DATE | 2022/11/16 | 09:25:17 | | | | |

| | | | | | | | | | |
|---|--|---------|--|------------------------|--|----------------|--|---|--|
| THIS DRAWING CONTAINS INFORMATION THAT IS PROPRIETARY TO MOLEX ELECTRONIC TECHNOLOGIES, LLC AND SHOULD NOT BE USED WITHOUT WRITTEN PERMISSION | | | | | | | | | |
| DIMENSION UNITS | | SCALE | | CURRENT REV DESC: | | | | molex | |
| IN/MM | | NTS | | | | | | | |
| GENERAL TOLERANCES (UNLESS SPECIFIED) | | | | EC NO: 728634 | | 2022/11/15 | | RIGHT ANGLE HEADER ASSY (SINGLE ROW) (MINI-FIT JR. SERIES) | |
| 4 PLACES | | ± | | DRWN: JERRYW8 | | 2022/11/16 | | | |
| 3 PLACES | | ± 0.015 | | CHK'D: XQZHANG | | 2022/11/16 | | PRODUCT CUSTOMER DRAWING | |
| 2 PLACES | | ± 0.38 | | APPR: XQZHANG | | 2022/11/16 | | | |
| 1 PLACE | | ± | | INITIAL REVISION: | | | | DOCUMENT NUMBER | |
| 0 PLACES | | ± | | DRWN: KSS | | | | | |
| ANGULAR TOL | | ± 3.0 ° | | APPR: RAS | | | | 55690004-SD | |
| DRAFT WHERE APPLICABLE MUST REMAIN WITHIN DIMENSIONS | | | | THIRD ANGLE PROJECTION | | DRAWING | | SERIES | |
| | | | | C-SIZE | | 5569 | | MATERIAL NUMBER | |
| | | | | | | SEE CHARTS | | CUSTOMER | |
| | | | | | | GENERAL MARKET | | SHEET NUMBER | |
| | | | | | | 2 OF 2 | | | |