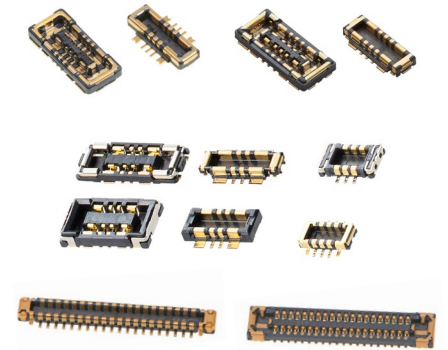


High Power Fine-Pitch Board-to-Board Connectors >

With increasing demand for high-current interconnections for applications such as fast charging, high-resolution/backlit displays and LED lighting, Molex offers fine-pitch connectors for ultra-compact board-to-board connections. This document highlights 0.35 and 0.40mm pitch SlimStack board-to-board connectors with 6 to 60 pin counts and from 3.0 to over 18.0A current ratings per connector.



ADVANTAGES AND FEATURES

Each of these Molex SlimStack board-to-board connectors has a receptacle and a plug, utilizes high-current terminal systems and incorporates one or more of the following features, offering great advantages to system designers.

Armor nails at the end caps for robustness and high-current terminals

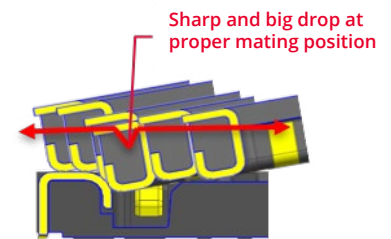
Full armor design protects the housing from inside and outside, preventing connector damage due to misalignment.

Stadium structure for an easy-to-find mating position

The center of the housing is lower, making the mating position easier to find.

Robust dual contact terminals for excellent insertion/retention force and a clear click feeling upon mating

The terminal shape makes it easy to lead the connector with reduced insertion force, while the lock shape provides a click feeling to ensure complete mating to the operators.



MARKETS AND APPLICATIONS



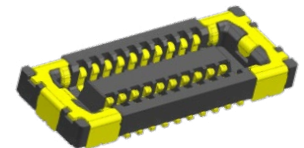
Wearables



Consumer



Datacom



Fast Charging



Small Displays and LED Lighting



Mobiles

High Power Fine-Pitch Board-to-Board Connectors >

SLIMSTACK FINE PITCH CHART

Series Name		Battery (Power)				Normal BTB		
		6A Battery	11A Battery	GCB7X	GCB7V	SSB RP	HB8	ACB6+
Series No.	Rec.	505004	217419	216656	220250	505066, 505270, 505000	202436	216700
	Plug	505006	217420	216657	220251	505070, 505244, 505000	202437	216701
Pitch (mm)		0.40mm	0.80mm	0.40mm	0.40mm	0.35mm	0.35mm	0.35mm
Mating Direction		Vertical	Vertical	Vertical	Vertical	Vertical	Vertical	Vertical
Dimensions	Height	0.75mm	0.75mm	0.70mm	0.70mm	0.60mm to 1.00mm	0.80mm	0.60mm
	Width	2.50mm	2.50mm	2.30mm	2.30mm	2.00mm	2.30mm	1.90mm
	Length	4.20mm	5.20mm	5.00mm	5.10mm	TP + 2.85mm	TP + 2.90mm	TP + 2.80mm
Circuit Size (Signal+Power)		4+4	8(Signal or Power)	6+4+2Power Nail	6+2+2Power Nail	6 to 60	40, 50, 60	10 to 60
Rated Voltage		50V	50V	50V	50V	50V	50V	50V
Rated Current Signal pin		0.3A	0.3A	0.3A	0.3A	0.3A	0.3A	0.3A
Rated Current Power		6.0A	11.0A	15.0A	15.0A	3.0A	5.0A	5.0A
Operating Temperature		-40 to +85°	-40 to +85°	-40 to +85°	-40 to +85°	-40 to +85°	-40 to +85°	-40 to +85°
Contact Plating		Gold	Gold	Gold	Gold	Gold	Gold	Gold

www.molex.com