



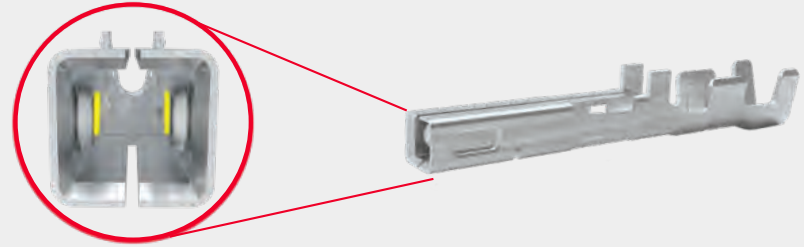
# MINI-FIT SIGMA POWER CONNECTOR >

Designed to improve PCB landscape and connector reliability



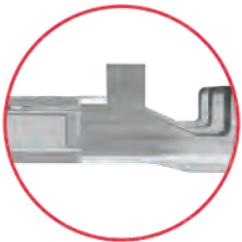
### Slim profile design

Allows for improved slim PCB on independent points per terminal



### Multiple contact points

Provide multiple points of contact and application landscape



### TPA Stop

Provides stability in the receptacle housing; offers physical blocking of the terminals to back out when TPA is properly inserted



### V0/Glow Wire Resin

Meets safety and environmental requirements mandated by the Home Appliance industry

- Pitch: 4.20mm
- Current: up to 13.5A
- Sigma has an optional TPA that has a slim profile design to take up less space on your PCB board
- Mini-Fit Sigma Receptacles mate with standard Mini-Fit Headers

## Ordering Information

Series	Circuits	Row
200453	2-6	Single
172708	2-14	Dual

Series	Circuits
172709	1-7

- TPA2 Terminals mate with Mini-Fit Sigma Receptacles

Series	Terminal	Current (A)
172718	Female	Up to 9.0
172765	Male	Up to 9.0
202988	Female	Up to 13.5
203070	Male	Up to 13.5

# MINI-FIT TPA2 POWER CONNECTOR

Power connectors that meet the requirements to support design flexibility

**TPA feature with secondary locking feature**  
Reduces assembly error and ensures terminals are fully seated and will not back out



**Positive lock receptacles**  
Help to ensure mated connector assemblies will not accidentally disengage (audible click)



**Fully isolated header pins, plugs, receptacles and terminals**  
Protect contacts against potential damage during handling and mating

- Pitch: 4.20mm\*
- Current: up to 13.5A
- TPA Optional
- V0, V2, V2/Glow Wire
- Mates with standard Mini-Fit Headers and Plugs

\* With TPA added, the connector space increases

## Ordering Information

- Mini-Fit TPA2 terminals mate with Mini-Fit TPA2 housing and Mini-Fit Sigma housing

Series	Component	No. of Rows
172708	Receptacle	Dual
172709	TPA	Single and Dual
200453	Receptacle	Single
200471	Plug	Single
172762	Free-Hanging Plug	Dual
172767	Panel-Mount Plug	Dual
200488	Panel-Mount Plug	Single
45135	TPA Cable Assembly	Single and Dual
203070	Male Terminal	N/A

For more information visit [www.molex.com/fit](http://www.molex.com/fit)