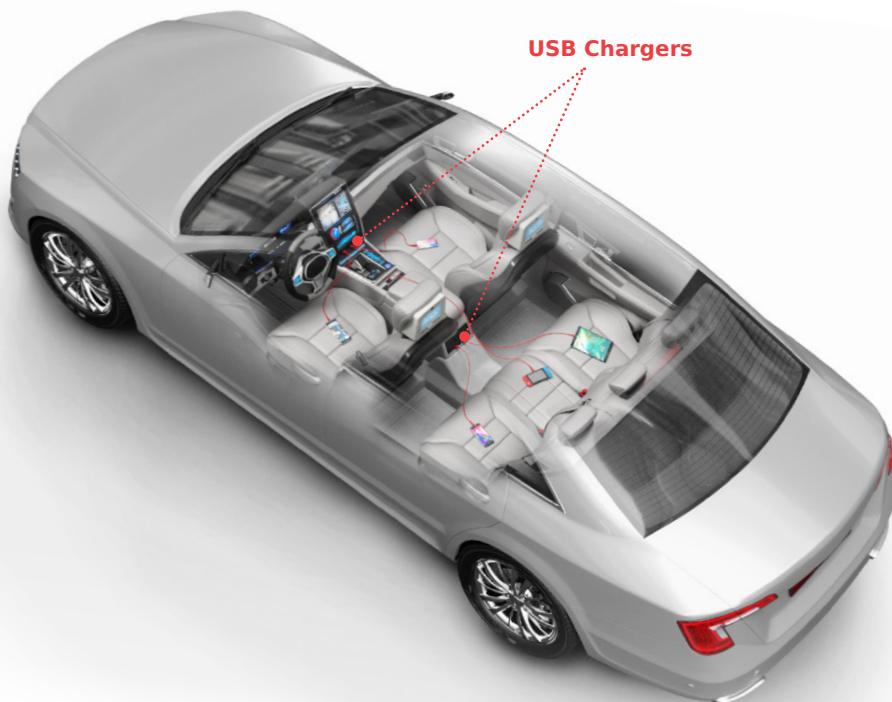




USB Type-C Receptacles

The automotive infotainment system has evolved into a multifaceted touch experience that uses both Wi-Fi and Bluetooth to keep everyone wirelessly connected while still offering only a single USB-C port for charging and data transfer.

As more consumer devices (such as phones, tablets and laptops) support USB-C and Power Delivery, the need for multiple USB-C and Power Delivery ports in cars is increasing. Consumers will soon be able to fast-charge all their devices (including laptops and tablets) over USB-C, as well as enable new features such as smart mirroring for rear-seat entertainment.



KEY ADVANTAGES

- Compatible with USB Type-C specification
 - Supports USB4 with 40-Gbps data rates
- Compatible with USB Power Delivery
 - Supports 5.0A maximum current rating
 - Offers up to 100W power supply
- Reversible plug makes it possible to insert both ways
- Lock structure with superior durability

MARKETS

Automotive

KEY APPLICATIONS

- In-vehicle infotainment
- Charging modules
- Rear seat entertainment

USB Type-C Receptacles

Top Mount, 24 Circuits,
USB4 with 0.35mm Standoff
(Series 201267)



Top Mount, 24 Circuits, USB4
(Series 105450)



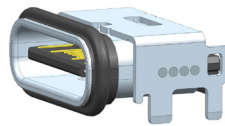
Vertical, 24 Circuits, USB4
(Series 204711)



Top Mount, 24 Circuits,
USB4 with Screw Hole
(Series 205714)



Waterproof, Top Mount, 16 Circuits,
USB 2.0 (Series 213083)



Mid-mount, 0.98mm Contact Height,
24 Circuits, USB4, Single Shell
(Series 105455)



Smart Charging Solution
with USB Type-C Port

Molex Part Number	USB Version	Data Rate	Circuit	Waterproof	PCB Mounting	Center Height (mm)	Solder Tail	Shell Type
1054500101	USB4	40 Gbps	24	No	Right Angle, Top Mount	1.58	SMT	DIP
2012670005	USB4	40 Gbps	24	No	Right Angle, Top Mount	1.93	SMT	DIP
2057141001	USB4	40 Gbps	24	No	Right Angle, Top Mount	1.93	SMT	Screw Hole
2047110001	USB4	40 Gbps	24	No	Vertical	9.05	SMT	DIP
1054550101	USB4	40 Gbps	24	No	Mid-Mount	0.60	SMT	DIP
2024100002	USB 3.2, Gen 1	5 Gbps	24	IPX8	Mid-Mount	0.40	SMT	DIP
2130830005	USB 2.0	480 Mbps	16	IPX8	Right Angle, Top Mount	1.58	SMT	DIP

COMPLETE SOLUTIONS TO ACHIEVE YOUR VISION

Our capabilities are constantly evolving to meet the demanding requirements for autonomous driving, infotainment and connectivity.

molex

www.molex.com/link/usb-c.html

Molex is a registered trademark of Molex, LLC in the United States of America and may be registered in other countries; all other trademarks listed herein belong to their respective owners.

Order No. 987652-2683

USA/0k/GF/2020.08

©2020 Molex