



Ultra-Fit Power Connectors

The New Tangless Wire-To-Board Version

Molex would like to give its customers more options for increasing terminal retention, like those seen in its other FiT Family product lines.

Customers will no longer need to choose a V0 flammability-rated receptacle or Glow Wire-capable receptacle. The new receptacles offer both advantages on the same product.

WHY NEW PRODUCTS?

To continue innovating for its customers and offering enhanced products, Molex has launched a new tangless version of receptacles and terminals in the Ultra-FIT product family. This is an enhancement to existing Ultra-Fit receptacles, terminals and TPA with

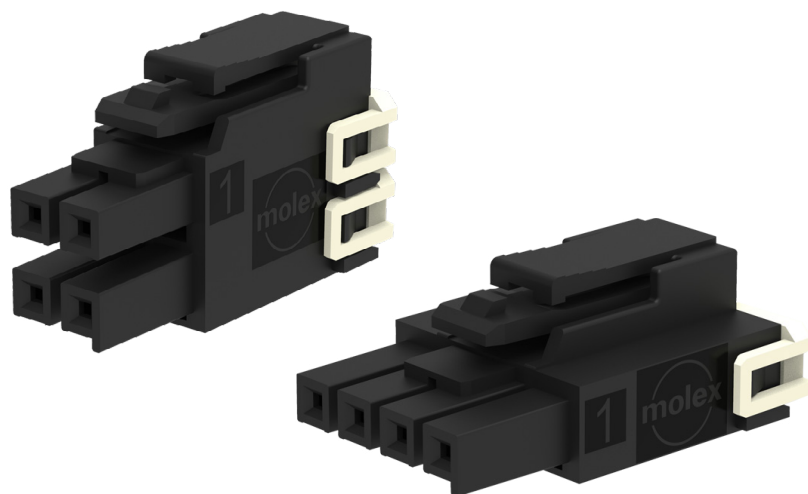
- New thumb latch design
- New tangless terminal locking tab feature
- New receptacle design for this tangless terminal

There is no change to any existing headers or plugs. Both new- and old-generation receptacles will mate with current header/plug options. An enhanced version of the right-angle header with solder nail is also available in the same product series.

WHAT IF I CURRENTLY PURCHASE THE OLD-GENERATION RECEPTACLE OR TERMINAL?

Existing customers can continue to purchase the former Ultra-FIT receptacles or terminals currently used in their programs. Molex will eventually obsolete these lines; however, headers (old and new versions) will remain active.

Molex will direct new customers to the newly designed parts and encourage existing customers to use new designs on upcoming projects so that they can experience the many advantages of Molex's Ultra-FIT products.



TARGET MARKETS

Automotive

- Infotainment
- Media modules

Home Appliance

- Refrigerators
- Dishwashers

Commercial Vehicle

- Power converters
- Unsealed electronic control modules



SALES INFORMATION



Readily available for customers



Fast lead times



Product Manager
Elena Dugger



For more information, visit
www.molex.com/FIT

ORDERING INFORMATION

Please contact your local Molex sales representative or product manager for more information.

Specifications

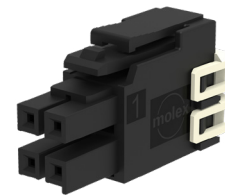
Receptacle Housing – Single Row

Ultra-Fit Existing Receptacle	Ultra-Fit Tangless Part Number	Circuit Size	Color
172256-1102	172256-3102	2	Black
172256-1103	172256-3103	3	Black
172256-1104	172256-3104	4	Black
172256-1105	172256-3105	5	Black
172256-1106	172256-3106	6	Black
172256-1107	172256-3107	7	Black
172256-1108	172256-3108	8	Black
172256-2102	172256-4102	2	Natural
172256-2103	172256-4103	3	Natural
172256-2104	172256-4104	4	Natural
172256-2105	172256-4105	5	Natural
172256-2106	172256-4106	6	Natural
172256-2107	172256-4107	7	Natural
172256-2108	172256-4108	8	Natural



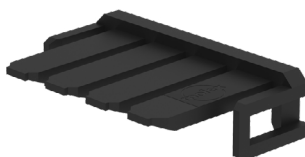
Receptacle Housing – Dual Row

Ultra-Fit Existing Receptacle	Ultra-Fit Tangless Part Number	Circuit Size	Color
172258-1104	172258-3104	4	Black
172258-1106	172258-3106	6	Black
172258-1108	172258-3108	8	Black
172258-1110	172258-3110	10	Black
172258-1112	172258-3112	12	Black
172258-1114	172258-3114	14	Black
172258-1116	172258-3116	16	Black
172258-2104	172258-4104	4	Natural
172258-2106	172258-4106	6	Natural
172258-2108	172258-4108	8	Natural
172258-2110	172258-4110	10	Natural
172258-2112	172258-4112	12	Natural
172258-2114	172258-4114	14	Natural
172258-2116	172258-4116	16	Natural



TPA (Terminal Position Assurance)

Ultra Fit Existing TPA Part Number	Ultra Fit Tangless TPA Part Number	Circuit Size	Color
172264-1002	172264-3002	2	Black
172264-1003	172264-3003	3	Black
172264-1004	172264-3004	4	Black
172264-1005	172264-3005	5	Black
172264-1006	172264-3006	6	Black
172264-1007	172264-3007	7	Black
172264-1008	172264-3008	8	Black
172264-2002	172264-4002	2	Natural
172264-2003	172264-4003	3	Natural
172264-2004	172264-4004	4	Natural
172264-2005	172264-4005	5	Natural
172264-2006	172264-4006	6	Natural
172264-2007	172264-4007	7	Natural
172264-2008	172264-4008	8	Natural



Terminals

Ultra-Fit Terminals with Tangs	Ultra-Fit Tangless Terminal	Plating	AWG
172253-3011	172253-6011	0.38µm Gold	16-18
172253-3111	172253-6111	0.38µm Gold	20-22
172253-3012	172253-6012	0.76µm Gold	16-18
172253-3112	172253-6112	0.76µm Gold	20-22
172253-3023	172253-7023	Tin / Nickel	16-18
172253-3123	172253-7123	Tin / Nickel	20-22



molex

www.molex.com/fit

Molex is a registered trademark of Molex, LLC in the United States of America and may be registered in other countries; all other trademarks listed herein belong to their respective owners.

Order No. 987652-1863

USA/0k/GF/2020.01

©2020 Molex