



Mega-FiT Terminal Position Assurance (TPA)

Wire-to-Wire and Wire-to-Board Power Connectors

To continue innovating for our customers and offering enhanced products, Molex has launched a set of Mega-FiT receptacles and terminals that will allow the use of its TPA accessories.

There is no change to any existing headers or plugs. Both new- and old-generation receptacles will mate with current header/plug options.

WHY NEW PRODUCTS?

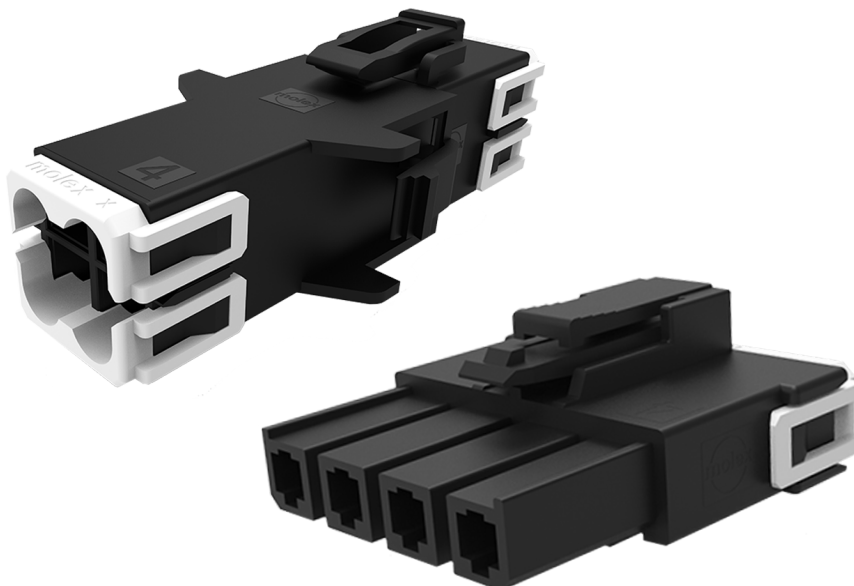
Molex would like to give its customers more options for increasing terminal retention, like those seen in its other FIT Family product lines.

The customer will no longer need to choose a V0 flammability-rated receptacle or Glow Wire-capable receptacle. The new receptacles offer both advantages on the same product.

WHAT IF I CURRENTLY PURCHASE THE OLD-GENERATION RECEPTACLE OR TERMINAL?

Existing customers can continue to purchase any Mega-FiT receptacles or terminals they are using in their existing programs. Molex will not obsolete these product lines in the near future.

Molex will direct new customers to the newly designed parts and encourage existing customers to use new designs on upcoming projects so that they can experience the many advantages of Molex Mega-FiT products.



TARGET MARKETS

Home Appliance

- Refrigerators
- Dishwashers

Commercial Vehicle

- Power converters
- Unsealed electronic control modules



SALES INFORMATION

-  Readily available for customers
-  Fast lead times
-  Product Manager
Clinton Newton
-  For more information, visit
www.molex.com/FIT

ORDERING INFORMATION

Please contact your local Molex sales representative or product manager for more information.

Specifications

Receptacles and Terminals That Are TPA Capable and Are Compatible Only with Each Other

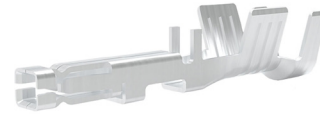
MEGA-FIT NEW RECEPTACLES

Part Number	Circuit Size	V0/GW
171692-0202	2	V0/GW
171692-0204	4	V0/GW
171692-0206	6	V0/GW
171692-0208	8	V0/GW
171692-0210	10	V0/GW
171692-0212	12	V0/GW
200456-1212	2	V0/GW
200456-1213	3	V0/GW
200456-1214	4	V0/GW
200456-1215	5	V0/GW
200456-1216	6	V0/GW
200456-1217	7	V0/GW
200456-1218	8	V0/GW



MEGA-FIT NEW TERMINALS

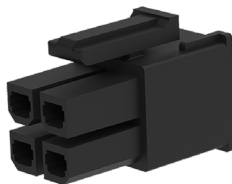
Part Number	AWG	Plating
768230-343	12	Tin
768230-344	14/16	Tin
172063-0333	12	0.38µm Au
172063-0334	14/16	0.38µm Au
172063-1333	12	0.76µm Au
172063-1334	14/16	0.76µm Au



Receptacles and Terminals That Are Not TPA Capable and Are Compatible Only with Each Other

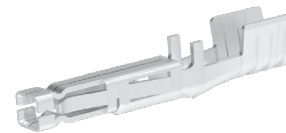
MEGA-FIT OLD-GENERATION RECEPTACLES

*Part Number	Circuit Size	V0 or Glow Wire	Replacement Part Number
170001-0102	2	GW	171692-0202
170001-0104	4	GW	171692-0204
170001-0106	6	GW	171692-0206
170001-0108	8	GW	171692-0208
170001-0110	10	GW	171692-0210
170001-0112	12	GW	171692-0212
171692-0102	2	V0	171692-0202
171692-0104	4	V0	171692-0204
171692-0106	6	V0	171692-0206
171692-0108	8	V0	171692-0208
171692-0110	10	V0	171692-0210
171692-0112	12	V0	171692-0212



MEGA-FIT OLD-GENERATION TERMINALS

*Part Number	AWG	Plating	Replacement Part Number
768230-321	14/16	Tin	768230344
768230-322	12	Tin	768230343
172063-0311	14/16	0.38µm Au	172063-0334
172063-0312	12	0.38µm Au	172063-0333
172063-1311	14/16	0.76µm Au	172063-1334
172063-1312	12	0.76µm Au	172063-1333



molex

www.molex.com/fit

Molex is a registered trademark of Molex, LLC in the United States of America and may be registered in other countries; all other trademarks listed herein belong to their respective owners.