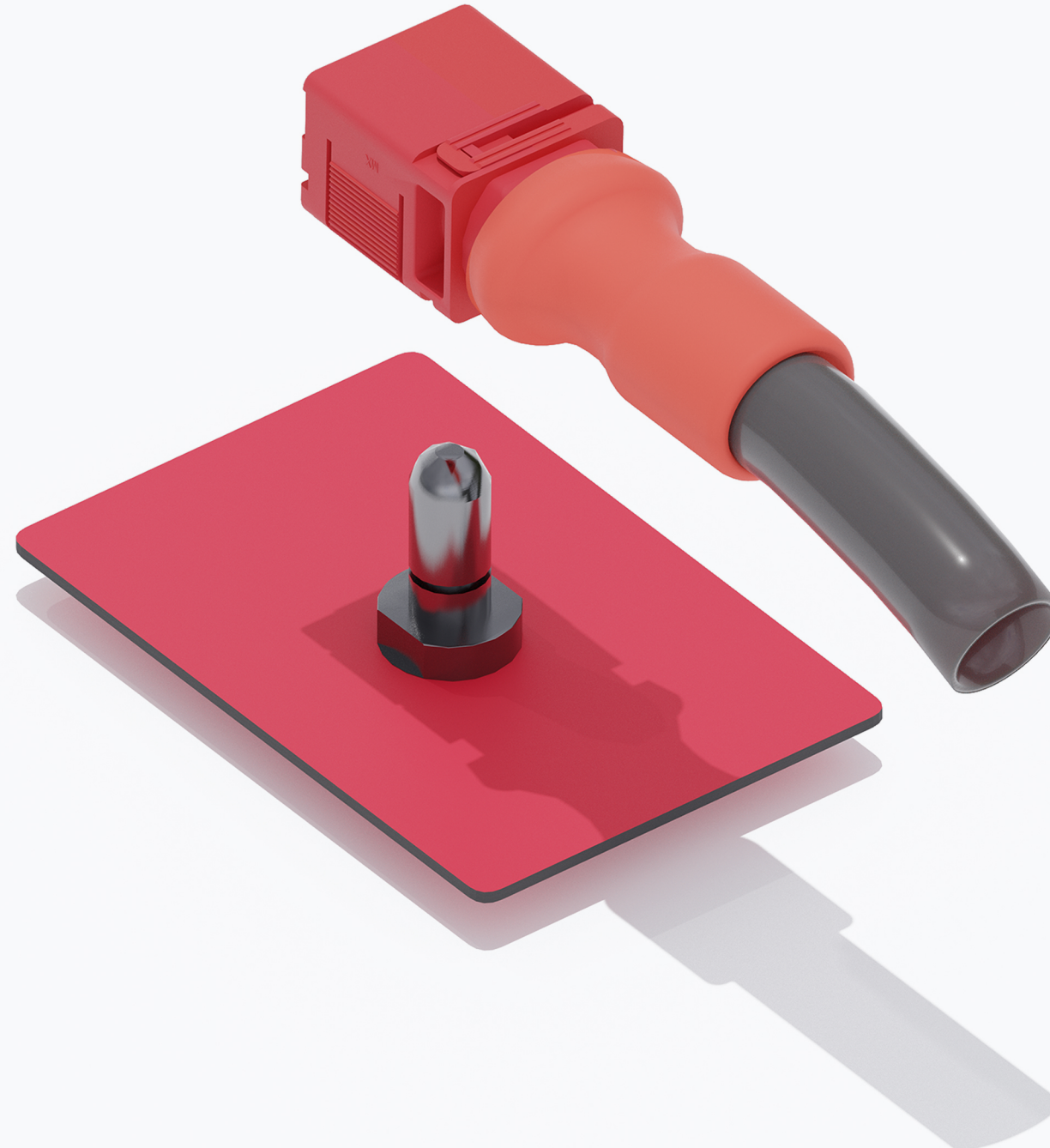


# SW1 High-Voltage, High-Current Connectors

Wire-to-Board  
Wire-to-Busbar



## Current Rating:

6.00mm: 120.0A  
8.00mm: 185.0A  
11.00mm: 300.0A

**Voltage Rating (max.): 1,000V**

SW1 Wire-to-Board Wire-to-Busbar Interconnects

Order No. 987652-6114

©Copyright 2023 Molex [www.molex.com/link/SW1.html](http://www.molex.com/link/SW1.html)

Molex is a registered trademark of Molex, LLC in the United States of America and may be registered in other countries; all other trademarks listed herein belong to their respective owners.

**molex**