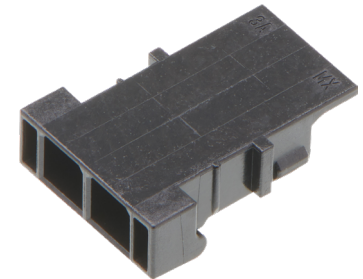
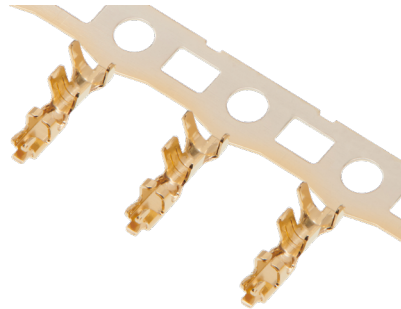
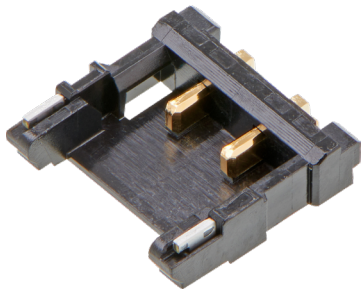


Pico-EZmate 1.80mm High-Current (HC) Wire-to-Board Connectors

Pico-EZmate 1.80mm HC Wire-to-Board Connectors offer the highest electric current of 5.0A among the Pico-EZmate family and have a compact design for excellent performance in tight-space applications.

FEATURES AND ADVANTAGES



Low profile and compact size

Is ideal for small consumer devices that have narrow space to mount the connectors

Polyamide material

Is low-halogen compliant

High current of 5.0A

Supports high electric current application requirements

Designed for battery connections

Supports battery connection for mobile devices

Reinforced locking force

Improves locking strength with a 10N min. force dual locking system

Ergonomic mating and un-mating in the diagonal direction

Allows for an easier mating and un-mating process

MARKETS AND APPLICATIONS

Consumer

Entertainment devices
Game machines
Smart devices
TV set-top boxes
Workstation PCs

Data Center

Data termination equipment

Home Appliances

White goods

Medical

Instruments

Mobile Device

Laptops
Tablet PCs
POS systems
Card readers

In-Vehicle Infotainment

Navigation systems
Lidar systems
Dashcams
Bluetooth charge boxes



Smart Devices



White Goods



POS Systems

Pico-EZmate 1.80mm High-Current (HC) Wire-to-Board Connectors >

SPECIFICATIONS

Reference Information

Packaging:

Plug assembly—embossed tape

REC housing—poly bag

Crimp terminal—reel

RoHS: Compliant

Low Halogen: Yes

Mechanical

Insertion Force (max.): 3.5kgf

Withdrawal Force (min.): 0.15kgf

Durability (max.): 30 cycles

Electrical

Voltage (max.): 250V

Current (max.): 5.0A

Contact Resistance: 20 milliohms

Dielectric Withstanding Voltage: No damage

Insulation Resistance: 1,000 Megohms

Physical

Housing: Polyamide—black

Terminal Plating: Copper and Gold

Operating Temperature: -40 to 105°C

ORDERING INFORMATION

Series	Component	Wire Gauge	Circuits
208294	Pico-Ezmate 1.80mm HC Wire-to-Board Plug Assemblies	-	2, 3, 4 and 5
208298	Pico-Ezmate 1.80mm HC Wire-to-Board Receptable Housings		
208299	Pico-Ezmate 1.80mm HC Wire-to-Board Crimp Terminals	22 and 24 AWG	-

www.molex.com/link/pico_ezmate.html