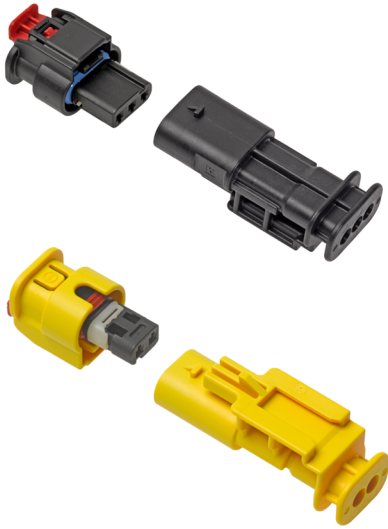


MXP120 Sealed Connector System >

The high-performing, compact MXP120 Sealed Connection System is ideal for harsh environments and space-constrained designs for safety, body electronics and powertrain applications.

FEATURES AND ADVANTAGES



Current	Up to 13.0A
Voltage	Up to 14V DC
Number of Circuits	2, 3, 4 and 6
Seal Rating	IPX8 (IPX9K under evaluation)
Connector Colors	Black, Yellow
Operating Temperature	-40 to +125°C

Female receptacles with Independent Secondary Locking (ISL)

Help ensure efficient terminal positioning and detection of partial installation of terminals

Space-saving 1.20mm terminals in a 4.00mm pitch

Meet power requirements up to 13.0A and are suitable for sealed safety-restraint, body electronics and powertrain applications

Shrouded female receptacles

Can be medium or long for 1x4 circuits and larger, or short for 1x2 and 1x3 circuits, and help ensure all circuit sizes and keying options are scoop-proof

Accommodates wire gauges up to 1.00mm²

Limits connector pitch to 4.00mm with single wire seal (SWS)

SWS connection system with robust perimeter seal

Is IPX8 waterproof rated (IPX9K is under evaluation) and withstands high-pressure spray environments



Integral fully protected locking latch and bridge protection

Provides reliable and efficient connector locking

Ergonomic and robust connector position assurance (CPA)

Offers superior ergonomics, with a more substantial CPA design versus competitor versions reducing the risk of breakage (during handling/wires snagging) or pre-seating (of itself) prior to connector mating. CPA actuation is a one-step process to minimize assembly operation. After connector mating, the CPA and integral latch combine to stabilize the connector interface without any impact on the mating force

Compatible with AK and conforming to GMW 3191 specifications

Meets requirements of European, Chinese and US automotive makers

Male connector compatibility with wire dress covers

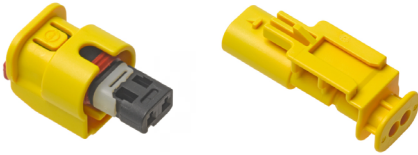
Offers the option of using off-the-shelf wire dress covers. Wire dress covers for receptacles (in development) will offer compatibility with MXP120 latch protection and enlarged CPA

Reduced package size when compared to existing 1.50mm connection systems

Offers significant space savings for confined design parameters

MXP120 Sealed Connector System >

FEATURES AND ADVANTAGES



Receptacle connectors utilize a preassembled, side-loaded independent secondary lock (ISL)

Improves terminal servicing, checks the finger position of the terminal latch; terminal position and reinforces primary terminal retention

Male blade connectors utilize a preassembled front-loaded primary lock reinforcement (PLR), also known as terminal position assurance (TPA)

Helps to minimize the number of components, making this connector very price competitive; improves terminal servicing; checks the finger position of the terminal latch; and reinforces terminal retention

MARKETS AND APPLICATIONS

Automotive (Electric Vehicles)

Door-lock mechanisms
Airbags—steering wheel/side/curtain
Exterior lighting
Safety/chassis
Safety restraint systems (SRS)
Seat-belt pretensioners
Turn signal lamps
Supplemental inflatable restraints (SIR)

Automotive (Internal Combustion Engines)

Door-lock mechanisms
Fuel injection
Airbags—steering wheel/side/curtain
Emission controls
Exterior lighting
Ignition coil
Safety/chassis
Safety restraint systems (SRS)
Seat-belt pretensioners
Supplemental inflatable restraints (SIR)
Turn signal lamps

Consumer

Any medium-power sealed applications up to 13.0A

Commercial Vehicle

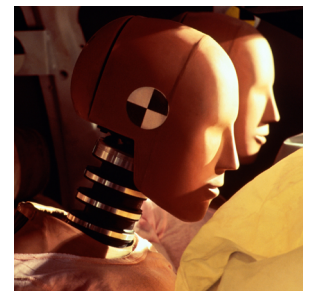
Airbags—steering wheel/side/curtain
Door-lock mechanisms
Emission controls
Exterior lighting
Fuel injection
Ignition coil

Safety

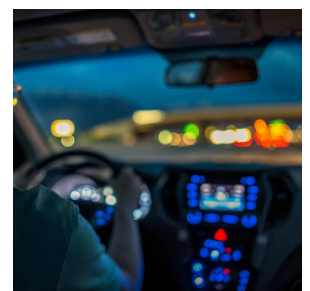
Safety restraint systems (SRS)
Seat-belt pretensioners
Supplemental inflatable restraints (SIR)
Turn signals (indicators)



Ignition Coils and Fuel Injectors



In-Vehicle Safety: Airbags



*Lighting, Turn Signals,
Door Locks*

www.molex.com/link/mxp120.html