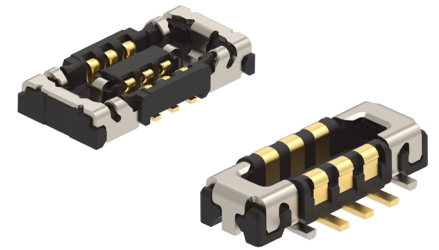


NB6 (Narrow Body) 0.35mm-Pitch Board-to-Board Connectors >

NB6 Board-to-Board Connectors offer a unique lead-in design for excellent alignment and terminal cross-mating prevention with 5.0A of current to deliver reliable power in a wide range of space-constrained applications.

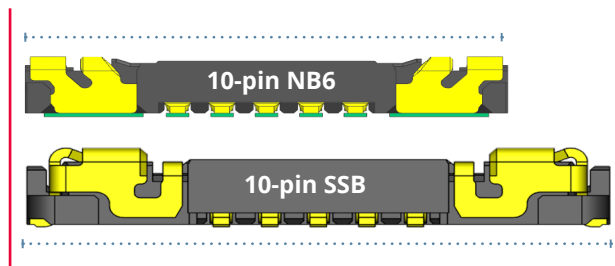


NB6 Board-to-Board Connectors

FEATURES AND ADVANTAGES

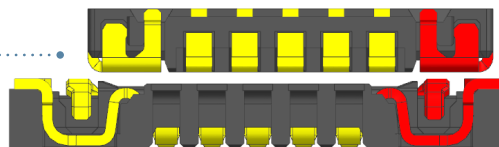
PCB PAD length reduction

Allows for space savings



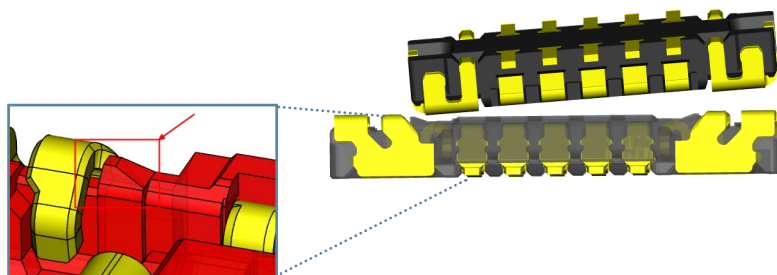
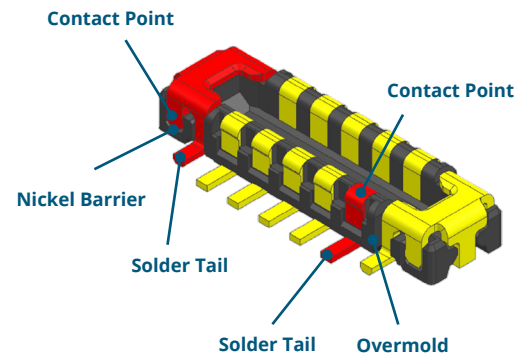
Lead-in alignment

Has surface-mount and intrusive reflow options available
Pitch: 0.20mm
Span: 0.23mm



Nickel barrier

Helps prevent solder wicking between solder tail and contact area of fitting nail



Cover-up spring contact of nail

Helps prevent terminal cross-mating.

MARKETS AND APPLICATIONS

Consumer

- AR/VR devices
- IoT devices
- True wireless stereo (TWS) devices



AR/VR Devices



IoT Devices



TWS Devices

NB6 (Narrow Body) 0.35mm-Pitch Board-to-Board Connectors >

TARGET SPECIFICATIONS

Reference Information

Packaging: Embossed tape with cover
Designed in: Millimeters
RoHS: Yes
Halogen Free: Yes

Physical

Housing: LCP
Nail: Copper alloy
Signal terminal: Copper alloy
Contact area—Gold
Solder tail area—Gold
Underplating—Nickel
Operating Temperature: -40 to +85°C

Electrical

Voltage (max.): 50V
Current (max.): Terminal 0.3A/pin, power nail 5.0A/pin
Contact Resistance: Signal Contact: 50 milliohms
Nail Contact: 20 milliohms
Dielectric Withstanding Voltage: 250V
Insulation Resistance: 100 Mohms

Mechanical

Pitch: 0.35mm
Mated Height: 0.60mm
Width: 1.50mm
Length (Receptacle):
[[Total circuit/2]-1]*pitch +2.40 mm
Durability (max.): 30 cycles

www.molex.com/link/nb6.html