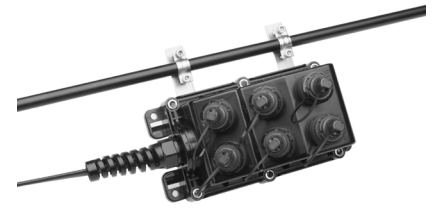


# Outside Plant Fiber Connectivity for FTTx Applications >

Factory-terminated fiber optic cables and assemblies provide guaranteed performance and rapid deployment, while hardened SC/APC connectivity and bend-limiting flat-drop cables help ensure robust and stable optical connections.



*Outside Plant Fiber Connectivity for FTTx Installations*

## FEATURES AND ADVANTAGES

### Flat drop cables

Provide a quick and easy “plug and play” connection from the Multiport Service Terminal (MST) to the home or business and offer excellent bend and kink protection. Can be installed in aerial, direct-buried or duct installations, thereby reducing the cost and time of drop cable deployment; also simplify installation and maintenance by reducing splicing in the distribution portion of the network.



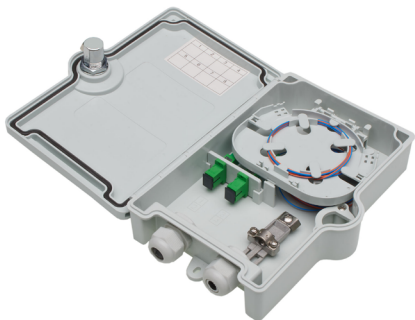
### Multi Service Terminal (MST)

Facilitates fastest deployment with guaranteed performance and reduced cost; also provides quick access for maintenance and troubleshooting; can be pole, wall or strand (aerial) mounted



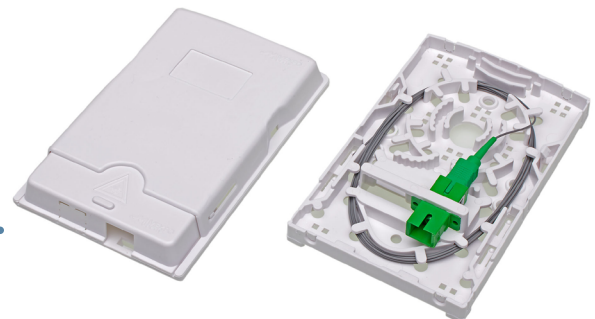
### Fiber Entrance Terminal

Facilitates easy, fast and unobtrusive termination at the building exterior; has UV-resistant housing that is designed for wall-mount applications to provide protection for fiber optic connections and splices in indoor and outdoor environments



### Fiber Wall Outlet

Integrates fiber splicing, flexible connections and storage in one unit, allowing the cables to be crossed and connected in a variety of ways; also protects the internal fiber bend radius and provides protection from dust and moisture



# Outside Plant Fiber Connectivity for FTTx Applications >

## MARKETS AND APPLICATIONS

### Telecom Infrastructure

Fiber to the home  
Distributed access/remote PHY  
Radio access network

Applicable Industry standards: IP67 | RoHS



8-Port Pole-Mounted MST

## SPECIFICATIONS

Hardened Optical Connector, Drop Cable and MST	
Connector Types	SC/APC, OptiTap Compatible
Insertion Loss	0.40 dB
Return Loss	> -65 dB
Total Assembly Insertion Loss	0.80 dB max.
Operational Temperature	-40 to +75°C

MST Physical Specifications	
Ingress Protection	IP68
Dimensions	104.78 by 279.40 by 114.30mm (4.125 by 11.000 by 4.500"), without cable
Weight (+/- 10%)	1.0 lbs
Cable Weight, Dielectric (lbs/kft +/- 10%)	21.7
Cable Weight, Toneable (lbs/kft +/- 10%)	35.4
Max Pole Diameter	Up to 8" *
Aerial Cable max. Diameter	Up to ¾" *

\* Additional installation options available

## ORDERING INFORMATION

Product Family	Part Number	Description	Fiber Type	Length
Multi Service Terminals	1063590000	4-Port Optical Drop Terminal, G657A1, Pigtail	SM	50'
	1063590001			250'
	1063590002			500'
	1063590003	8-Port Optical Drop Terminal, G657A1, Pigtail	SM	50'
	1063590004			250'
	1063590005			500'
	1063590006	12-Port Optical Drop Terminal, G657A1, Pigtail	SM	50'
	1063590007			250'
1063590008	500'			

# Outside Plant Fiber Connectivity for FTTx Applications >

## ORDERING INFORMATION

Product Family	Part Number	Description	Fiber Type	Length
Optical Drop Cable Assembly	1063590100	HSCA Flat Drop Pigtail, G657A1	SM	100'
	1063590101			250'
	1063590102			300'
	1063590103	HSCA Flat Drop Pigtail, G657A1, Toneable	SM	100'
	1063590104			250'
	1063590105			300'
	1063590200	HSCA Flat Drop Jumper, G657A1	SM	100'
	1063590201			250'
	1063590202			300'
	1063590203	HSCA Flat Drop Jumper, G657A1, Toneable, G657A1	SM	100'
	1063590204			250'
	1063590205			300'
	1063590300	HSCA to SC/APC Flat Drop Jumper with Pulling Eye, G657A1, 50FT	SM	50'
	1063590301			150'
	1063590302			300'

Product Family	Part Number	Description	Fiber Type
NID/Demarc Box	1063590400	2-Port Exterior Demarcation Box, SC/APC	SM
	1063590401	2-Port Exterior Demarcation Box, SC/APC, Splice Tray	
	1063590402	2-Port Exterior Demarcation Box, SC/APC, Splice Tray, with Pigtails	SM
	1063590403	6-Port Exterior Demarcation Box, SC/APC	SM
	1063590404	6-Port Exterior Demarcation Box, SC/APC with Pigtails	

Product Family	Part Number	Description	Fiber Type
Wall Outlet	1063590500	2-Port Wall Outlet Terminal Box, SC-APC	SM
	1063590501	2-Port Wall Outlet Terminal Box, SC-APC with Pigtails	

[www.molex.com/link/osp.html](http://www.molex.com/link/osp.html)