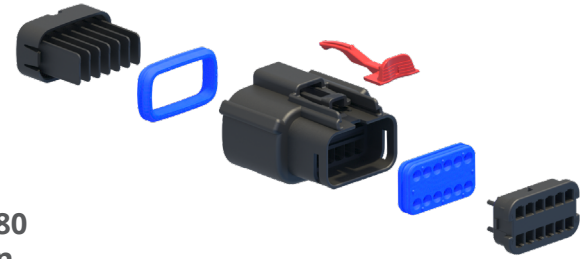


# MX150 Hybrid Sealed Connector System >

Molex's MX150 Hybrid Sealed Connector System offers outstanding flexibility and space savings by integrating 1.50, 2.80 and 6.30mm terminals into one package for a complete solution.



MX150 Hybrid Sealed Connector System

## FEATURES AND ADVANTAGES

### Hybrid Sealed Connectors



Circuit Sizes offered	8-way, 9-way, 10-way, 12-way, 16-way
Genders offered	Male, Female
Polarization options	Keys: A, B, C, D
Colors offered	Black, Light Gray, Dark Gray, Stone Gray
Industry interface	USCAR-2, USCAR-21 and GMW3191
Operating specifications	Current up to 22A, -40 to +150 °C
Other features	Optional clip slot (11.00mm), TPA, CPA and Custom Void Patterns

#### Connector position assurance (CPA) option available

Helps to eliminate accidental disconnection between connectors

#### Preassembled terminal position assurance (TPA) housing

Helps ensure crimped terminal leads are properly locked in place

#### Grommet cap

Protects mat seal and helps ensure proper alignment of the terminals

#### Four key options available

Facilitate quick visual installation

#### Mat seal technology for MX150 (1.50mm) terminals

Helps eliminate the need for individual cable seals, reducing package size

#### One-piece 3.50mm-pitch housing

Offers a compact connector and helps eliminate the cost of assembly

## MARKETS AND APPLICATIONS

### Automotive

Automotive vehicles  
Commercial vehicles  
Industrial vehicles and equipment  
Recreational vehicles

### Commercial Vehicle

ATVs  
Marine: under-dash wiring, lighting  
Forklifts

### Industrial Automation

Robotics  
Industrial machines and motors



Automotive Vehicles



Robotics



ATVs

# MX150 Hybrid Sealed Connector System >

## SPECIFICATIONS

### REFERENCE INFORMATION

Part Series:

- 8-Way Hybrid Receptacle Connectors – 160078
- 8-Way Hybrid Blade Connectors – 160079
- 9-Way Hybrid Blade Connectors – 160081
- 10-Way Hybrid Receptacle Connectors – 160076
- 10-Way Hybrid Blade Connectors – 160077
- 12-Way Hybrid Receptacle Connectors – 160111
- 12-Way Hybrid Blade Connectors – 160112
- 16-Way Hybrid Receptacle Connectors – 34985
- 16-Way Hybrid Blade Connectors – 34986
- 20-Way Hybrid Panel Mount Connectors – 214468

Packaging: Housings – bulk pack  
Designed in: Millimeters

### MATES WITH/USE WITH

Mates With:

- Series 214468: receptacle connectors, series 33472

Use With:

- Series 160078:  $\mu$ DPB modules (series 200316); MX150 receptacle terminals, series 33012, 33001; Apex 6.30mm receptacle terminal PN 33140138
- Series 160077, 160079, 160081: MX150 receptacle terminals, series 33012, 33001; MX150 blade terminals, series 33000, 33011; Sumitomo receptacle terminals, PN 8240-0423, 8240-0424; Sumitomo blade terminals, PN 8230-5257, 8230-5258
- Series 160076:  $\mu$ DPB modules, series 200316; MX150 receptacle terminals, series 16077; Apex 6.30mm receptacle terminals, PN 33140138
- Series 160111, 160112: MX150 receptacle terminals, series 33012, 33001; MX150 blade terminals, series 33000, 33011; Sumitomo receptacle terminals, PN 8240-0423, 8240-0424; Sumitomo blade terminals, PN 8230-5257, 8230-5258
- Series 34985: MX150 receptacle terminals, series 33012, 33001; Sumitomo receptacle terminals, PN 7158-3111, 7158-3112, 7158-3113
- Series 34986: MX150 blade terminals, series 33000, 33011; Sumitomo blade terminals, PN 7158-3111, 7158-3112, 7158-3113
- Series 214468: MX150 receptacle terminals, series 33001, 33012

### ELECTRICAL

Voltage (max.): 14V DC  
Current (max.): 22.0A (for MX150 terminals)  
Contact Resistance (max.): 8 milliohms  
Dielectric Withstanding Voltage (min.): 1000V AC  
Isolation Resistance (min.): 100 Megohms

### MECHANICAL/ELECTRICAL/SEALING

Durability: 8 milliohms max. at 10 cycles  
Sealing: USCAR-2 Sealing Class 2

### PHYSICAL

Housing: Nylon 40% glass filled  
TPA: Nylon 40% glass filled  
Wire Gauge:  
MX150 Terminals ISO Wire: 0.35 to 1.50mm<sup>2</sup>,  
SAE Wire: 22 to 14 AWG  
Additional Terminal Options:  
Series 160078, 160079: Unsealed FCI Apex 6.30mm terminals – 6.00mm<sup>2</sup>  
Series 160081: Unsealed FCI Apex 2.80 and 6.30mm terminals – 1.00 to 6.00mm<sup>2</sup>  
Series 160076, 160077: Unsealed FCI Apex 2.80mm terminals – 1.00 to 3.00mm<sup>2</sup>  
Series 160111, 160112, 34985, 34986: Sumitomo 2.80mm terminals – 1.00 to 2.50mm<sup>2</sup>  
Operating Temperature: -40 to +125 °C

[www.molex.com/link/mx150.html](http://www.molex.com/link/mx150.html)