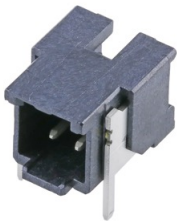


Micro-One Through-Hole Connectors >

As the need for contact reliability in compact, harsh-environment applications grows, Molex's Micro-One Through-Hole Connectors provide a robust 2.00mm-pitch solution for components to withstand severe conditions, offering integrated independent secondary lock (ISL), potting capabilities and Glow Wire capable options.

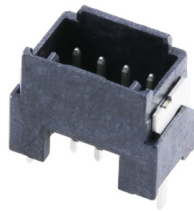
FEATURES AND ADVANTAGES

Voltage (max.)	250V
Current (max.)	4.0A
Operating temperatures	-40 to 105°C
Glow Wire Capable	Yes



Offers reduced weight and space savings

Low-profile design



Helps ensure reliability

UL certification

Helps prevent ingress of dust and moisture

Potting on vertical-orientation connectors



Provide design flexibility

Vertical and right-angle headers with 2 to 8 circuits

Meets the required EU regulations for the home appliance market

Glow Wire capable

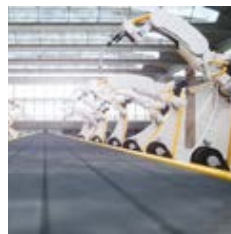
MARKETS AND APPLICATIONS

Consumer

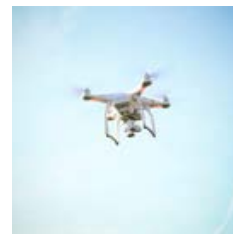
Air conditioners
Drones
Refrigerators
Vacuum cleaners
Vending machines
Washing machines
Water heaters/boilers

Industrial

Factory automation equipment
Power tools
Robotics
Test equipment



Robotics



Drones



Vending Machines

Micro-One Through-Hole Connectors

SPECIFICATIONS

Reference Information

Packaging: Tray (header assembly)
 UL File No.: TBD
 CSA File No.: TBD
 Mates with: 205979, 212724
 Terminal Used: 56134
 Designed In: (Millimeters)
 RoHS: Yes
 Glow Wire capable: Yes

Electrical

Voltage (max.): 250V
 Current (max.): 4.0A (2 circuit, 22 AWG)
 Contact Resistance (max.): 20 milliohms
 Dielectric Withstanding Voltage: 1000V AC
 Insulation Resistance: 1000 Megohms

Mechanical

Durability (max.): 30 cycles

Physical

Housing: Black
 Contact: Copper Alloy
 Terminal Pin—Tin-Bismuth over Nickel
 Nail Plating: Tin
 PCB Thickness: 1.60mm
 Operating Temperature: -40 to +105°C

ORDERING INFORMATION

Series No.	Description	Potting Capability	Glow Wire	Circuits / Wire size (AWG)	Rows	Color
220029-10X5	Through Hole Vertical header	Yes	Yes	2, 3, 4, 5, 6, 7, 8	Single	Black
220030-10X1	Through Hole Right angle header	Yes	Yes			
205979-20X1	Receptacle housing	No	Yes			
212724-20X1		No	Yes			
56134-9001	Crimp terminal	-	-	22 to 24	-	-
56134-9002		-	-	26 to 28	-	-

X = Circuit

Y=1; Without cover tape

Y=3; With cover tape

Y=5; Without cover tape

Y=7; With cover tape

www.molex.com/link/microone.html