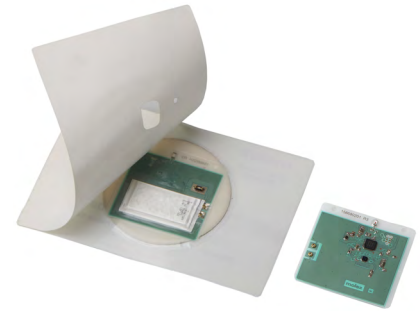


# Smart Sensing Labels >

Leveraging expertise with Bluetooth, thin-film batteries and off-the-shelf sensor integration, Molex Smart Sensing Labels use flexible printed electronics to help manufacturers protect product quality and identify supply chain problems by monitoring conditions such as location, temperature, pressure, shock and vibration



Smart Sensing Label

## FEATURES AND ADVANTAGES

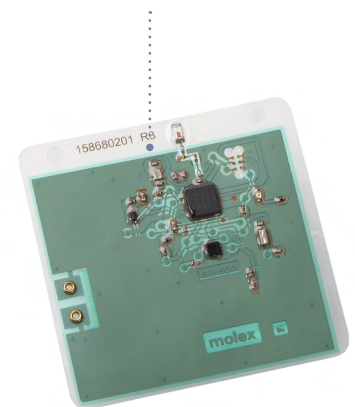
### Low-power wireless capabilities

Each label provides excellent low-power solutions with one (possibly two) of the following:

- Radio frequency identification (RFID) and near field communication (NFC), with programming and custom graphics
- Bluetooth (BLE)/long range (LoRa) (custom integration for remote and wireless applications)

### Readily available sensors and components integrated with Molex printed electronic platforms

Delivers the ability to continuously monitor a range of conditions, such as temperature, pressure and location, to control and ensure product quality and security



### Molex's off-the-shelf sensors range in capabilities from temperature monitoring to location, shock, vibration and more

Offers a customizable smart sensing label tailored for a customer's specific need

### Transmits data in real time or stores data for downloading at a future or preprogrammed time

Makes data available at whatever time the customer needs it. Enables customer to modify conditions to protect products or prove at a later date that conditions were optimal to ensure product integrity

## MARKETS AND APPLICATION

### Industrial

Medical product monitoring  
Pharmaceutical product monitoring  
Food and beverage product monitoring



Pharmaceuticals



Food and Beverage Manufacturers



[www.molex.com/link/smartsensinglabels.html](http://www.molex.com/link/smartsensinglabels.html)