

# Standard .093" Pin and Socket Connectors

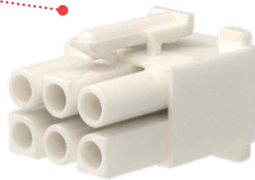


Standard .093" Pin and Socket Connectors provide a cost-effective solution for various applications in wire-to-wire and wire-to-board combinations while offering a flexible design choice for medium-power applications

## Features and Advantages

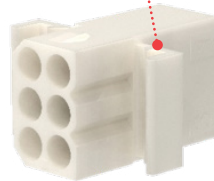
### Positive locking

Ensures a reliable connection



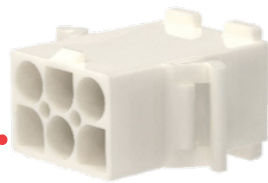
### Panel-mount options

Ensure flexible mounting on panels with standard and pre-bent ears



### Keying and polarizing features

Allow operators to avoid mis-mating during the assembly process



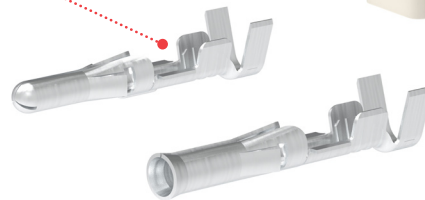
### Polarized header versions available in 5.03mm-pitch size

Help PCB designers in powering systems by using both male and female header pin combinations



### High-current terminals and double crimp options

Help customer applications reach current up to 17.0A. Improve connector power performance by eliminating crimping errors



## Applications

### Telecommunications/Networking

Rack-mount servers

### Consumer

Microwave ovens

Refrigerators

### Data/Computing

Desktop computers and motherboards

Hard disk drives

### Gaming Devices & Machines

Pachinko and other types of

Gaming machines



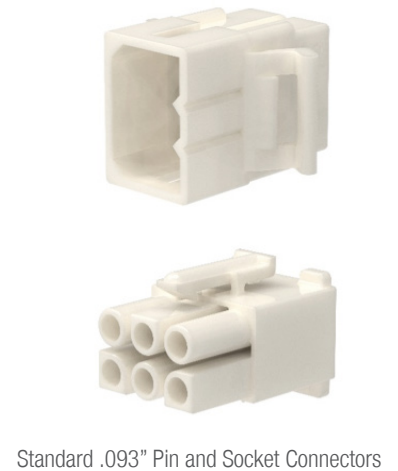
White Goods



Rack-Mount Servers



Desktop Computer



Standard .093" Pin and Socket Connectors

# Standard .093" Pin and Socket Connectors

**molex**

## Specifications

### REFERENCE INFORMATION

Packaging:  
Terminals: Reel and bag  
Headers: Bag  
Housings: Bag  
UL File No.: E29179  
CSA File No.: LR19980  
Mates With: .093" Connector Housings  
Use With: .093" Terminals only  
Terminal Used: Reel  
Designed In: Millimeters  
RoHS: Compliant  
Halogen Free: Yes  
Glow Wire Capable: Yes

### ELECTRICAL

Voltage (max.): 600V  
Current (max.): 17.0A  
Contact Resistance: 10 milliohms  
Dielectric Withstanding Voltage: 2000V AC

### MECHANICAL

Contact Insertion Force: 22.2N max  
Contact Retention to Housing: 89.0N min  
Mating Force: 32.25N max  
Unmating Force: 7.12N min  
Durability (min.): Tin: 25 cycles  
Gold: 250 cycles

### PHYSICAL

Housing:  
Plugs and Receptacles: Nylon UL 94V-2  
Headers: Polyester 94 V-2, Nylon 94V-2  
Contact: Brass  
Plating:  
Contact Area — Tin or Gold (15u" only)  
Solder Tail Area — Tin  
Underplating — Nickel, Copper  
PCB Thickness: 1.60mm  
Operating Temperature: -40 to +105°C

[www.molex.com/link/standard\\_093.html](http://www.molex.com/link/standard_093.html)

Molex is a registered trademark of Molex, LLC in the United States of America and may be registered in other countries; all other trademarks listed herein belong to their respective owners.