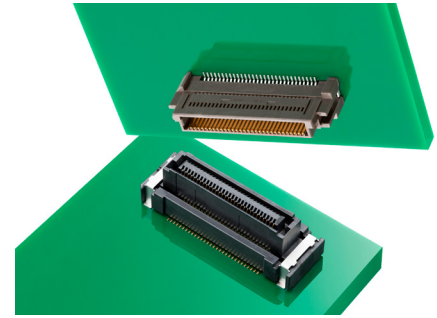


# SlimStack Board-to-Board Connectors, 0.635mm Pitch, Floating Series

**molex**

SlimStack Board-to-Board Connectors, 0.635mm Pitch, Floating Series feature a wide floating range with various circuit sizes and stacking heights while offering space savings, design flexibility and a simplified assembly process.



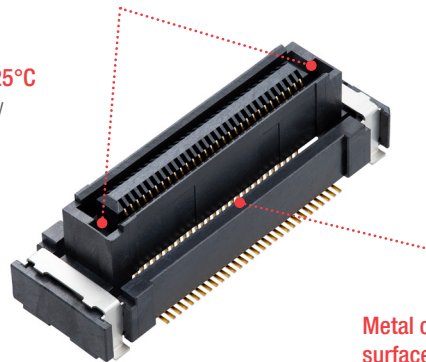
SlimStack Board-to-Board Connectors, 0.635mm pitch, Floating Receptacle

## Features and Advantages

**Polarization feature**  
Prevents mismatching

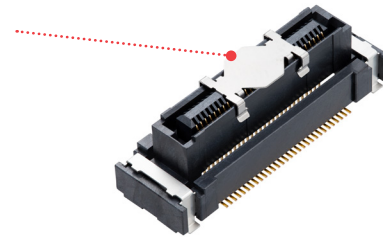
**High-temperature support up to 125°C**  
Provides improved design applicability

**Available in various mated heights (12.00 to 16.00mm)**  
Offers design flexibility



**Wide floating range**  
Simplifies mating process; facilitates assembly in the event of misalignment or blind joining

**Metal cap for surface mounting**  
Facilitates easy pick and place



LINE UP Combination						
Series Number	Receptacle	Plug				
	209168	55091	53625	53647	53649	53627
Mated Height (mm)	12.00 to 16.00	12.00	13.00	14.00	15.00	16.00

## Applications

### Industrial

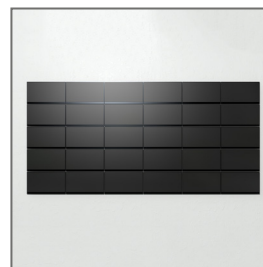
- PLC/motion control units
- LED displays

### Automotive

- Domain control units
- ADAS applications
- Car infotainment systems



PLC/Motion Control Unit



LED Display



Car Infotainment

# SlimStack Board-to-Board Connectors, 0.635mm Pitch, Floating Series



## Specifications

### REFERENCE INFORMATION

Packaging: Embossed tape on reel  
(Connector with metal cap)  
Designed In: Millimeters  
RoHS: Yes

### ELECTRICAL

Voltage (max.): 100V  
Current (max.): 0.5A/circuit  
Contact Resistance (max.): 80 Milliohms  
Dielectric Withstanding voltage: 250V AC/1 min.  
Insulation Resistance(min.): 1000 Megaohms

### MECHANICAL

Durability (max.): 50 cycles

### PHYSICAL

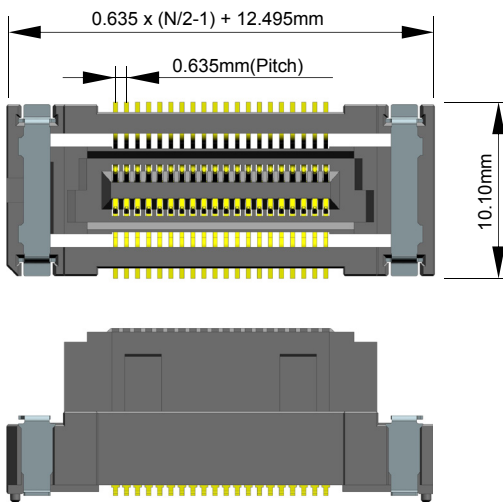
Housing:  
Receptacle : LCP, UL 94V-0, Black  
Plug : LCP or PPS, UL 94V-0, Brown or Black  
Contact: Copper Alloy  
Fitting Nail : Copper Alloy  
Plating : Contact Area — Gold  
Solder Tail Area — Gold Terminal  
/ Tin (Nail)  
Underplating — Nickel  
Operating Temperature: -40 to +125°C

## Dimensions

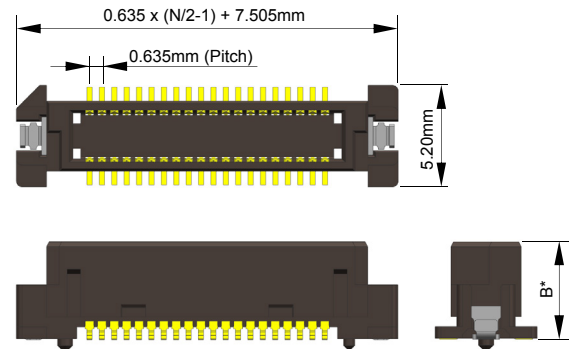
N: Circuit Size

\* Refer to drawing for detail dimension

### Receptacle



### Plug



## Ordering Information

Series No.	Part Number	Product Attribute	Stacking Height (mm)	Circuits
<a href="#">209168</a>	2091680xx1	Receptacle	12.00 to 16.00	40, 60, 80
<a href="#">55091</a>	55091xx74	Plug	12.00	
<a href="#">53625</a>	53625xx74		13.00	
<a href="#">53647</a>	53647xx74		14.00	
<a href="#">53649</a>	53649xx74		15.00	
<a href="#">53627</a>	53627xx74		16.00	

[www.molex.com/link/slimstack.html](http://www.molex.com/link/slimstack.html)

Molex is a registered trademark of Molex, LLC in the United States of America and may be registered in other countries; all other trademarks listed herein belong to their respective owners.