

Micro-Lock Plus 1.25mm Pitch Vertical Header with Potting Capability

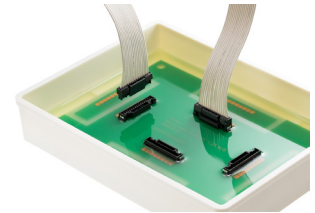
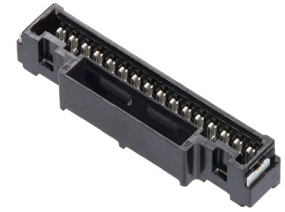
molex

Smallest wire-to-board 'potting' connector with 3.00mm-high potting material to safeguard contact and latch areas in applications requiring environmental protection

Features and Advantages

Withstands up to 105°C operating temperatures

Meets the extended temperature requirements of various industries and withstands harsh environments



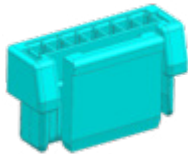
Micro-Lock Plus 1.25mm Pitch Vertical Header with Potting Capability (view of board with the connector mounted and potting liquid)



Crimp Terminal
505431-****

Tin-Bismuth terminals

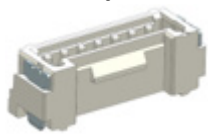
Prevents whickering for a clean and uninterrupted signal; supports terminal ruggedness and reliability



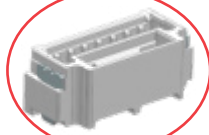
Receptacle Housing
505565-****
204532-**** (Low Halogen)

Smallest 1.25mm-pitch vertical header with positive lock and potting capability

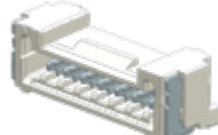
Prevents whickering for a clean and uninterrupted signal; supports terminal ruggedness and reliability



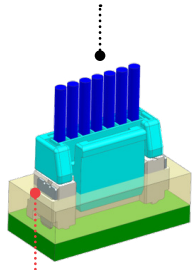
Plug Housing (Vertical)
505568-****



Plug Housing (Vertical)
205957-**** (Low Halogen)

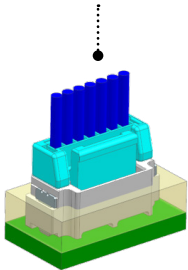


Plug Housing
Right-Angle
505567-****



Robust metal solder tabs

Provides secure PCB retention and strain relief to solder joints

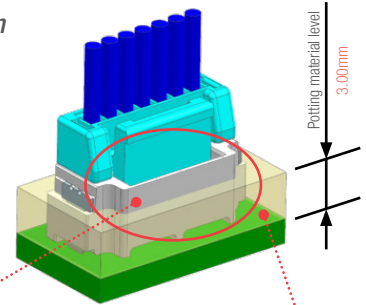


Wide positive latch that delivers audible click

Offers contact assurance and secure mating retention

Micro-Lock Plus 1.25 Vertical Header

Potting version



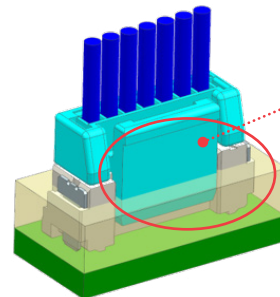
Added walls to protect positive lock from being immersed in potting material

Provides durability

Potting liquid (up to 3.00mm height)

Prevents ingress of dust and moisture

Normal version



Positive lock immersed in potting material



Potting version vs Normal version

Micro-Lock Plus 1.25mm Pitch Vertical Header with Potting Capability



Markets and Applications

Industrial

- Power tools
- Test equipment
- Robots
- Factory automation
- Drones
- Vending machines



Power tool



Drone



Refrigerator

Consumer

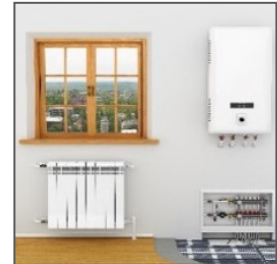
- Refrigerators
- Air conditioners
- Hot water gas heaters



Vending machine



Air conditioner



Hot water gas heater

Specifications

REFERENCE INFORMATION

- Packaging: Embossed (Header assembly)
- Mates With: Micro-Lock Plus Connectors
- Designed In: Millimeters
- RoHS: Yes
- Low halogen: Yes

ELECTRICAL

- Voltage (max.): 50V
- Current (max.): 3.6A * 2 circuit/26 AWG
- Contact Resistance (max.): 20 milliohms
- Dielectric Withstanding Voltage: 500V AC
- Insulation Resistance (min.): 100 Megohms

Current Derating Reference Information

AWG#	Amps (A)		
	2-Circuit	8-Circuit	16-Circuit
26	3.6	2.4	2.2
28	3.1	2.1	1.8
30	2.8	1.8	1.5

MECHANICAL

- Crimp Terminal Insertion Force (max.): 4.9N
- Crimp Terminal Retention Force (min.): 9.8N
- Crimping Pull Out Force (min.): 19.6N *26 AWG
- Housing Lock Strength (min.): 58.8N *14-16 circuits
- Durability (max.): 30 Cycles

PHYSICAL

- Header Housing – PA
- Header Pin: Copper Alloy, Tin Bismuth plating
- Operating Temperature: -40 to +105°C

Micro-Lock Plus 1.25mm Pitch Vertical Header with Potting Capability



Ordering Information

NEW 1.25 HEADER

Series No.	Pitch (mm)	Component	Circuits	Rows	Color
205957	1.25	Vertical Header with potting capability	2 to 16	Single	Black

Existing 1.25 Micro-Lock Plus Connectors without Potting Capability

Series No.	Pitch (mm)	Component	Circuits	Rows	Color
505431	-	Female Receptacle Terminal	-	-	-
204532	1.25	Receptacle Housing (Low Halogen)	2 to 16	Single	Black

www.molex.com/microlockplus.html

Molex is a registered trademark of Molex, LLC in the United States of America and may be registered in other countries; all other trademarks listed herein belong to their respective owners.