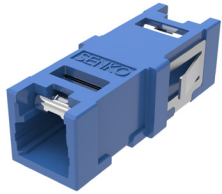


CS Adapter and Cable Assembly



Delivering reduced ferrule pitch and a nearly 50% higher density than LC connectors, the Molex CS Adapter and Cable Assembly support next-generation 200/400 Gbps QSFP-DD and OSFP transceivers with optimized performance

Features and Advantages



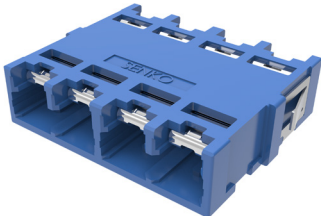
CS Single-Channel Adapter, 2F

Reduced fiber pitch
Provides fiber capacity at higher densities than LC adapters



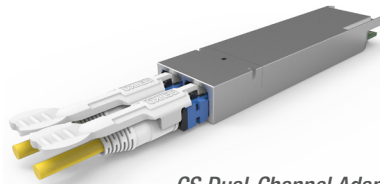
CS Dual-Channel Adapter, 4F

Multiple adapter channel options available
Offers 1, 2 and 4 channels to meet a range of application requirements



CS 4-Channel Adapters, 8F

Available with or without flanges
Provides installation flexibility



CS Dual-Channel Adapter and Cable Assembly Mating with QSFP-DD Interface

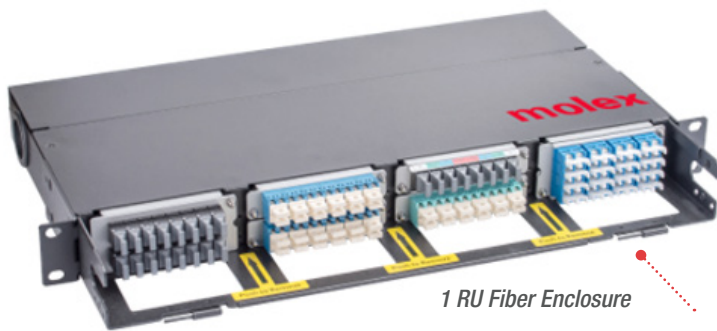
LC standard ferrule (X 2)
Features ceramic ferrule performance and reliability

Capacity: nearly 50% higher density compared to LC connector
Eases space constraints as data centers upgrade to meet increasing bandwidth demands

Push-pull tab
Facilitates access in high-density applications without disturbing adjacent channels

CS Cable Assembly

Cable OD: 2.00mm
Ruggedized to enable frequent plug-in/pull-outs



1 RU Fiber Enclosure



48.00mm



55.00mm



62.00mm



69.00mm

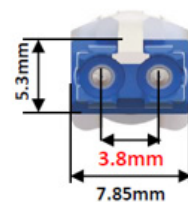
Available pull-tab options
(55.00/62.00mm length is Molex default)

Increased fiber density over LC solutions

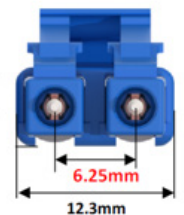
The CS Adapter's reduced ferrule pitch accommodates 256 CS fibers in a 1 RU chassis, while the same number of LC fibers would require a 2 RU chassis. Replacing the LC adapter panels in the Molex 1 RU 144F chassis with CS adapter panels increased the fiber count to 256F. Molex's 1 RU 192F Chassis is a multifunction platform that is used with LC/MPO/MTP/MTP-LC and CS cassettes. Fiber capacity can be increased to 256F by installing CS cassettes, which are effective for data center cable management and distribution



CS Cassette



CS



LC duplex

Ferrule pitch smaller than LC connector

CS Adapter and Cable Assembly



Markets and Applications

Data Centers and Telecommunications/Networking

- Cable distribution/management
- 10/40/100G system migration
- Switches/routers
- Servers
- Cloud computing



Cloud Computing



Switches/Routers

www.molex.com/link/csadapter.html

Molex is a registered trademark of Molex, LLC in the United States of America and may be registered in other countries; all other trademarks listed herein belong to their respective owners.