

Micro-Fit+ Connector System >

The Micro-Fit+ Connector System offers high current capability for space-constrained applications, with a variety of configurations and a 40% reduced mating force for enhanced ergonomics and assembly efficiency. Our Micro-Fit+ PCIe Connectors offer full PCIe CEM specification compliance in a compact, space-saving design with hybrid power and signal integration.

ADVANTAGES AND FEATURES

Helps prevent potential arcing

due to fully isolated contacts on each side of the interface

Allows customers to meet the European standard for electrical requirements

due to V-0/Glow Wire combination resin

Provides stability and security for the terminals inside the receptacle

with enhanced Terminal Position Assurance (TPA) design

Helps prevent mis-mating

as a result of unique keying design

Offers PCB design flexibility and improved strength and reliability

as a result of unique keying design with clip and nail SMT options

| | |
|------------------------|--------------|
| Current (max.) | 13.0A |
| Pitch | 3.00mm |
| Operating temperatures | -40 to 105°C |
| Voltage (max.) | 600V |

Reduces labor costs, saves time and resources

with reflow-capable options available

Allows for ease of work, reducing operator fatigue during assembly with its unique design

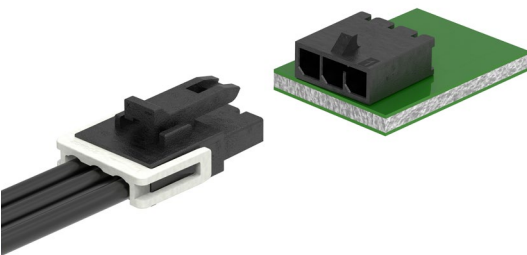
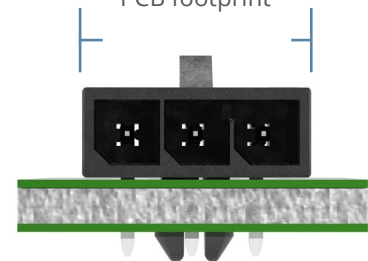
because of the 40% reduced mating force

Helps ensure proper mating orientation

with fully polarized housings (not compatible with standard Micro-Fit 3.0 Connectors)

Provides design flexibility

due to smaller PCB footprint



Micro-Fit+ Connector System >

ADVANTAGES AND FEATURES

Micro-Fit+ PCIe 12V-2x6 Connectors

Supports ampere interrupting capacities (AICs) up to 675W

with 9.5A per pin; hybrid 12-power + 4-signal pin design utilizes high-current alloy for power pins

Complies with industry standards

due to conformance with PCIe CEM 5.0/6.0 specifications and Molex-engineered reliability



APPLICATIONS

Consumer

Copiers
Freezers
Pinball and slot machines
3D printers
Refrigerators
Vending machines
Video poker and pachinko equipment
Washing machines



High-Speed Compute and Routers



Appliances



Diagnostic Equipment

Medical

Diagnostic equipment
Patient monitors

Sustainable Energy

Solar power

Telecommunications/ Networking

Routers and switches
Servers
High-speed compute and storage systems
Graphics and gaming systems
Internet of Things (IoT)
Data centers
High-performance computing equipment
Artificial intelligence/machine-learning systems
Virtual reality

Automotive

Telematics
Non-critical applications

Micro-Fit+ Connector System >

SPECIFICATIONS

Micro-Fit+ Connector System

Reference Information

Packaging: Bag, tray, reel

UL File No.: E29179

CSA File No.: LR19980

Mates With:

Series: [206832](#) Series: [206461](#)

Series: [215759](#) Series: [223794](#)

Use With:

Series: [206460](#) Series: [206461](#)

Series: [206461](#) Series: [206462](#)

Terminal Used:

Series: [206460](#)

Designed In: Millimeters

RoHS: Yes

Halogen Free: Yes

Glow Wire Capable: Yes

Electrical

Voltage (max.): 600V AC (RMS) or DC

Current (max.): 13.0A

Contact Resistance: 10 milliohms maximum

Dielectric Withstanding Voltage: No breakdown;
current leakage < 5mA

Insulation Resistance: 1000 megohms minimum

Mechanical

Pitch: 3.00mm

Contact Insertion Force: 14.7N (3.3 lbf)

Maximum insertion force

Contact Retention to Housing: 24.5N (5.5 lbf)

Insertion Force to PCB: 13.7N (3.1 lbf)

Minimum retention force

Mating Force (max.):

7.0N per circuit Tin (Sn)

1.0N per circuit Gold (Au)

Unmating Force (min.):

1.4N per circuit Tin (Sn)

0.2N per circuit Gold (Au)

Physical

Housing: Glass filled liquid crystal polymer

Contact: High Copper Alloy

Plating: Gold (Au) or Tin (Sn) over Nickel overall

PCB Thickness: Standard 1.57mm

Operating Temperature: -40 to +105°C

Micro-Fit+ PCIe 12V-2x6 Connectors

Reference Information

Series: [219116](#)

Mates With:

Series: [219114](#)

Terminal Used:

Series: [220226](#)

Series: [219197](#)

Electrical

Low Level Contact Resistance:

Power Terminal: 5 mΩ Signal

Terminal: 20 mΩ

Insulation Resistance: 1000MΩ min.

Voltage (max.): 600V AC/DC

Current (max.): 9.5A (Power)/1A (Signal)

Dielectric Withstand Voltage: 1500V AC

Temperature Rise: 30°C ma

Rated current up to 9.5 A per contact with all

12 power contacts energized

4 signal contacts rated to 1.0A

Fully isolated terminals

Positive locking on housing with low thumb

latch operation

Physical

Header: Liquid crystal polymer, UL 94V-0, black

Header Pin: High Copper Alloy (Cu), Tin (Sn) plating

Receptacle: Nylon, UL 94V-0, low halogen, black

Power Terminal: High-current Cu alloy

Signal Terminal: Phosphorous Bronze

www.molex.com/link/microfitplus.html