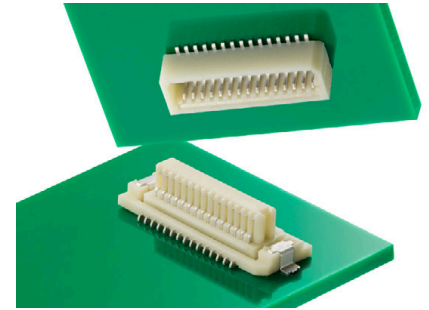


SlimStack Board-to-Board Connectors, 0.80mm Pitch Series >

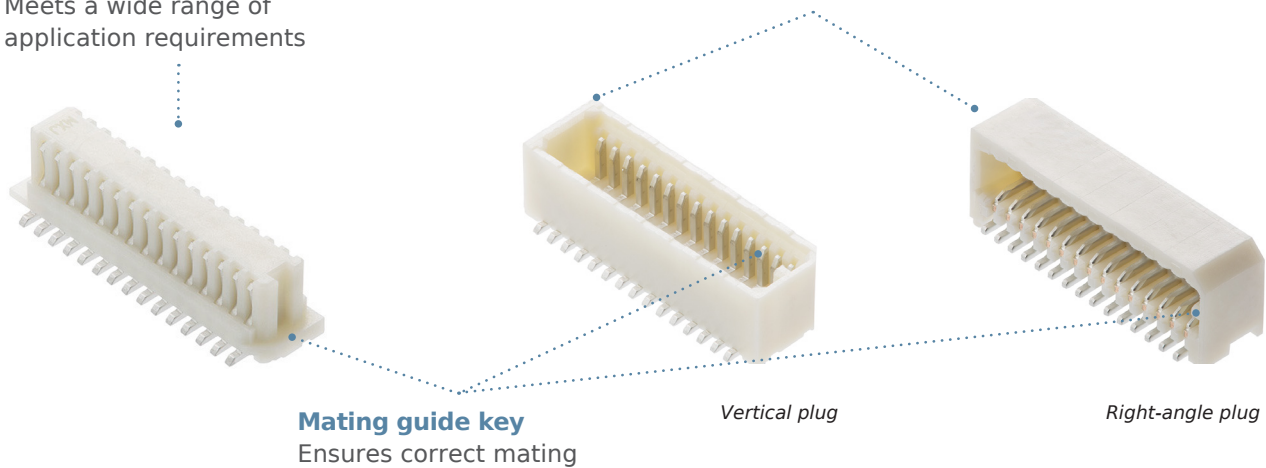
0.80mm Pitch SlimStack B-to-B Connectors offer wide range in circuit sizes and both vertical and right-angle mating orientations for design flexibility



FEATURES AND ADVANTAGES

Rigid-type connectors available in 10 to 40 circuits
Meets a wide range of application requirements

Both vertical and right-angle mating orientations
Offers design flexibility for specific space requirements



LINE UP Combination			
	Receptacle	Plug	
	52465	53307	53309
Rigid Type			
Mated Height (mm)	4.50 / 5.65	4.50	5.65

APPLICATIONS

Automotive
Car infotainment

Consumer
Smart speakers
Home appliances

Datacom
Servers
Office equipment

Industrial
Automation machines



Car Infotainment



Smart Speaker



Office Equipment

SlimStack Board-to-Board Connectors, 0.80mm Pitch Series

SPECIFICATIONS

REFERENCE INFORMATION

Packaging: Embossed Tape and Reel

Designed In: Millimeters

RoHS: Yes

Halogen Free: No

ELECTRICAL

Voltage (max.): 50V

Current (max.): 0.5A per circuit

Contact Resistance (max.):

20 milliohms (mate with 52465 series)

Dielectric Withstanding Voltage (min.): 500V AC

Insulation Resistance (min.): 100 Megohms

MECHANICAL

Mating Force (max.):

Refer to product specifications

Unmating Force (min.):

Refer to product specifications

Durability (max.): 30 cycles

PHYSICAL

Housing: PA, UL 94V-0

Contact: Copper Alloy

Plating:

Contact Area – Refer to ordering information

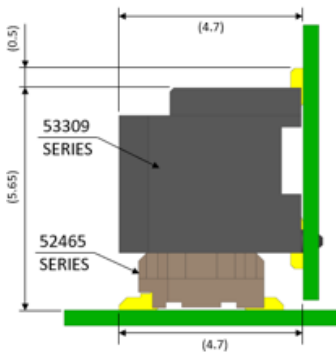
Solder Tail Area – Refer to ordering information

Underplating – Nickel

Operating Temperature: -40 to +105°C

DIMENSIONS

Refer to drawing for detail dimension



ORDERING INFORMATION

Structure	Order No.		Mated Height (mm)	Mated Width (mm)	Orientation	Boss		Plating	Circuits
	Receptacle	Plug				Receptacle	Plug		
Rigid Type	<u>52465-**70</u>	<u>53309-**71</u>	5.65	4.70	Right Angle	With Boss	With Boss	Tin	20, 24, 26, 28, 30, 40
	<u>52465-**71</u>	<u>53307-**71</u>	4.50	7.20	Vertical	Without Boss	Without Boss		10, 12, 14, 16, 18, 20, 22, 24, 26, 28, 30, 32, 36, 40
		<u>53309-**70</u>	5.65	4.70	Right Angle			10, 12, 14, 16, 18, 20, 22, 24, 26, 28, 30, 32, 36, 40	
	<u>52465-**62</u>	<u>53309-**62</u>	5.65					Gold	20, 30, 32

xxx: Circuit Size

www.molex.com/link/slimstack.html