

Mini-SPOX 2.50mm Wire-to-Board Connector System

molex

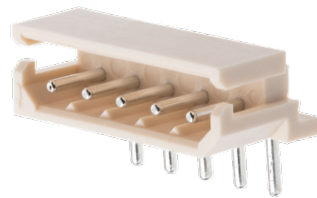
Ideal for compact applications, the Mini-SPOX 2.50mm Wire-to-Board Connector System provides electrical and mechanical reliability in a high-temperature design that meets automotive, consumer and industrial industry requirements

Features and Advantages



Uses popular crimp terminals
Easy to access the crimp applicators as they are widely available in the market

Terminal lance
Fastened with terminal to provide improved terminal retention



Through hole round terminals
Supports terminal ruggedness and reliability



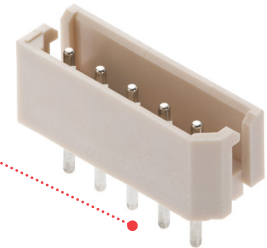
Mini-SPOX 2.50mm Wire-to-Board Connector System

2 to 15 circuits, single-row plug in vertical and horizontal configurations
Offers design flexibility



Friction lock
Provides better mating retention of housing and header

Polarizing features
Ensures mating in proper orientation



2.50mm-pitch connector
Provides space saving

RoHS compliance and high-temperature capabilities
Withstands harsh environments

Applications

Industrial Automation

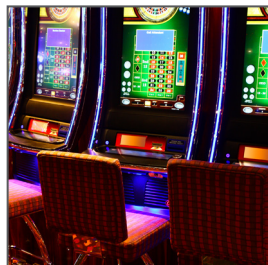
Automation equipment

Consumer

- White goods
- Gaming machines
- Drones
- Air conditioners
- Laser printers
- Vacuum cleaners
- Desktop PCs
- Power tools

Automotive

- Steering wheel, paddle shift, combination switches
- Shifters
- Head-, rear- and side-mirror lights
- Internal connection with other units



Gaming Machines



White Goods



Steering Wheel Switches

Mini-SPOX 2.50mm Wire-to-Board Connector System



Specifications

REFERENCE INFORMATION

Packaging: Reel (Terminal)
Tray (Header Assembly)
Poly Bag (Receptacle Housing)
Mates With: Mini-SPOX Connectors
Use With: 5264
Terminal Used: 5263PBT
Designed In: Millimeters
RoHS: Yes
Low Halogen: No

ELECTRICAL

Voltage (max.): 250V
Current (max.): 3.0A (AWG#22)
Contact Resistance on Crimped Portion (max.):
5 milliohms
Dielectric Withstanding Voltage: 1000V AC (1
minute)
Insulation Resistance (min.): 1000 Megaohms

MECHANICAL

Crimp Terminal Insertion Force (max.): 14.7N
Crimp Terminal Retention Force (min.): 14.7N
Pin Retention Force (min.): 9.8N
Crimping Strength (min.): 39.2N (AWG#22)
Durability (max.): 30 Cycles

PHYSICAL

Housing:
Receptacle – PA66
Header – PA66
Contact: Phosphor Bronze
Plating (Receptacle):
Contact Area — Pre-Tin
Plating (Header): Brass
Contact Area — Tin
Operating Temperature: -40 to +105°C

Ordering Information

Series No.	Pitch (mm)	Component	Circuits	Rows	Color
5263	2.5	Female Receptacle Terminal	-	-	-
5264		Receptacle Housing	2 to 15	Single	Natural
5267		Vertical Header			
5268		Right-Angle Header			

www.molex.com/link/Mini-spox.html

Molex is a registered trademark of Molex, LLC in the United States of America and may be registered in other countries; all other trademarks listed herein belong to their respective owners.