

# LumaLink MPO Optical Trace Cable Assemblies



LumaLink Optical Trace Cable Assemblies with high-density MPO connectors feature full illumination of the entire cable facilitate advanced cable management by providing 100% visual identification of start and endpoints, slack storage locations and routing

## Features and Advantages

### Cable illumination from origin to endpoint

Ensures visual identification of:

- Cable start and endpoint
- Slack storage locations
- Routing within rack frame and cable tray
- Routing within installation/data center

### Magnetic power connection for illumination function. Two on each end of the cable assembly

Provides full-length cable illumination. Capable of 360° rotation. Offers easy self-latching attachment



### MPO Connector

Precision-molded NTT-compatible ferrule connects 12F optical cable  
Push-pull connector housing provides quick and reliable connections  
Multiple ribbons stacked inside round jacket provides low-profile solution for high-density applications

### FlexiBend Boot

Allows field grooming of bend radius.  
Enables change of direction for better cable management

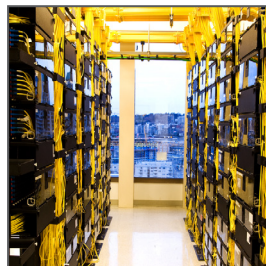
## Applications

### Data Centers

- Servers
- Storage
- Switching
- Routers

### Telecommunications/Networking

- System Integrators



Servers

# LumaLink MPO Optical Trace Cable Assemblies



## Specifications

### *REFERENCE INFORMATION*

Packaging: Bag  
Mates With: MTP/MPO connector to MTP/MPO  
Use With: Cable configurations with  
MPO/MTP optical interconnects  
Designed In: Millimeters  
RoHS: Yes  
Halogen Free: No

### *PHYSICAL*

Housing Material: Polymer  
Housing Colors: Aqua, Green or Black,  
Others Upon Request  
Ferrule: MT  
Operating Temperature: -10 to +60°C

### *OPTICAL*

MTP/MPO: 10 to 20N  
Durability (min.): 50 cycles — Per Telcordia GR-1435  
Insertion Loss (IL) (max.):  
Multimode Fibers — 0.75dB  
Singlemode Fibers — 1.0dB  
Return Loss:  
Multimode — -20dB  
Singlemode — -20dB

[www.molex.com/link/lumalink.html](http://www.molex.com/link/lumalink.html)

Molex is a registered trademark of Molex, LLC in the United States of America and may be registered in other countries; all other trademarks listed herein belong to their respective owners.