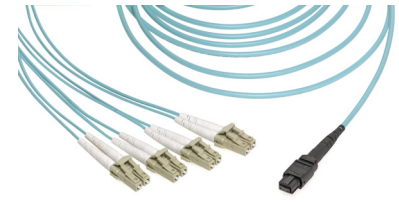


# MTP/MPO and LC Data Center Cable Solutions

With high-density MTP/MPO and LC connectors, multiple cable configurations and integrated specialty components, Molex Data Center Cable Solutions support the integration of high-performance networks, while reducing overall system cost and maintenance.



MPO-to-4-LC Breakout Assembly

## ADVANTAGES AND FEATURES

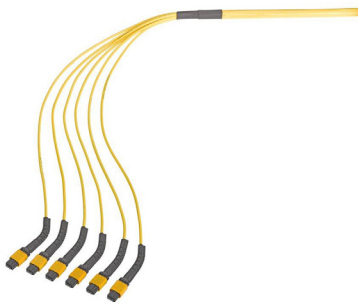
**Supports data rates across many applications**  
Single-mode and multi-mode available

**Alleviates cable congestion, offers bendable strain relief to secure any configuration and ensures cable performance over multiple bends in various directions**  
FlexiBend Boot available for additional fiber routing capabilities

Low-loss options available	Cable assemblies 100% insertion-loss tested prior to shipping
Meets insertion-loss budgets	Ensures high performance; reduces customer installation time

**Simplifies implementation through compatibility with other pre-installed cables**  
Industry-standard MPO interface and LC connector housing

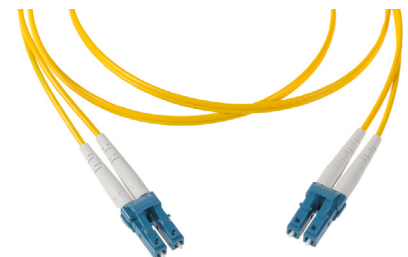
**Offers uni-boot and duplex boot options for LC duplex connectors**  
Common and proven technologies combined in the LC connector system uni-boot



6 MPO/MTP Breakout



QSFP Assembly with MPO/MTP Connectors



LCD-to-LCD Cable Assembly

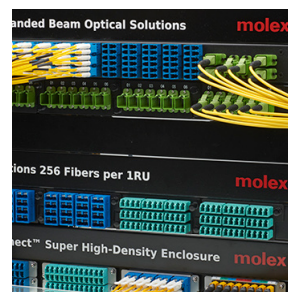
## APPLICATIONS

### Telecommunications/Networking

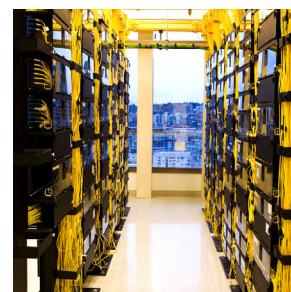
- Optical transceivers
- Optical switches and routers
- Structural cabling

### Data Centers

- Servers
- Racks



Data Center Rack



Data Center Servers

# MTP/MPO and LC Data Center Cable Solutions

## SPECIFICATIONS

### MTP/MPO Cable Assemblies

#### Reference Information

Packaging: Individually Bagged  
Mates With: MPO Adapters/QSFP Transceivers  
Use With: MPO Adapters/QSFP Transceivers  
Designed In: Meters  
RoHS: Yes  
Halogen Free: TBD

#### Connector

Type:  
MPO female, aqua for multi-mode  
MPO female, yellow for single-mode low loss

#### Mechanical Properties:

Fiber Count: 12 and 24 fiber options  
Operating Temperature: -5 to +70°C  
Durability (min.): 50 mating cycles

### LC Cable Assemblies

#### Reference Information

Packaging: Individually Bagged  
Mates With: LC Adapters/SFP Transceivers  
Use With: LC Adapters/SFP Transceivers  
Designed In: Meters  
RoHS: Yes  
Halogen Free: Yes

#### Connector

Ferrule: Zirconia Ceramic  
Housing: Plastic

#### Mechanical Properties:

Operating Temperature: -5 to +70°C  
Durability (min.): 250 mating cycles

### Applies to Both LC and MPO Assemblies

#### Fiber

Multi-mode:  
50/125  $\mu\text{m}$  OM3 Bend-Insensitive  
50/125  $\mu\text{m}$  OM4 Bend-Insensitive  
Single-mode:  
OS2 ITU-T G.657.A1 Bend-Insensitive

# MTP/MPO and LC Data Center Cable Solutions >

## ORDERING INFORMATION

Product Family	Part Number	Description	Fiber Type	Length
LC Cable Assemblies	<a href="#">88537-1501</a>	LCD/UPC JPR SM BIF 2.0mm ZPCD PLN	SM	1.0m
	<a href="#">88537-1503</a>			3.0m
	<a href="#">88537-1505</a>			5.0m
	<a href="#">88537-1510</a>			10.0m
	<a href="#">88537-1520</a>			20.0m
	<a href="#">88537-3501</a>	LCD JPR MM OM3 2.00m ZPCD PLNM	OM3	1.0m
	<a href="#">88537-3503</a>			3.0m
	<a href="#">88537-3505</a>			5.0m
	<a href="#">88537-3510</a>			10.0m
	<a href="#">88537-3520</a>			20.0m
	<a href="#">88537-4501</a>	LCD JPR MM OM4 2.0mm ZPCD PLNM	OM4	1.0m
	<a href="#">88537-4503</a>			3.0m
	<a href="#">88537-4505</a>			5.0m
	<a href="#">88537-4510</a>			10.0m
	<a href="#">88537-4520</a>			20.0m

Product Family	Part Number	Description	Fiber Type	Length
MPO QSFP Cable Assemblies	<a href="#">88536-6203</a>	MTP QSFP Jumper	OM3	3.0m
	<a href="#">88536-6205</a>	MTP QSFP Jumper		5.0m
	<a href="#">88536-6210</a>	MTP QSFP Jumper		10.0m
	<a href="#">88536-6215</a>	MTP QSFP Jumper		15.0m
	<a href="#">88536-6503</a>	MTP QSFP to 4x LCD		3.0m
	<a href="#">88536-6505</a>	MTP QSFP to 4x LCD	5.0m	
	<a href="#">88536-6703</a>	MTP QSFP Jumper	SM	3.0m
	<a href="#">88536-6705</a>	MTP QSFP Jumper		5.0m
	<a href="#">88536-6710</a>	MTP QSFP Jumper		10.0m
	<a href="#">88536-6715</a>	MTP QSFP Jumper		15.0m
	<a href="#">88536-6803</a>	MTP QSFP to 4x LCD		3.0m
	<a href="#">88536-6805</a>	MTP QSFP to 4x LCD		5.0m

# MTP/MPO and LC Data Center Cable Solutions >

## ORDERING INFORMATION

Product Family	Part Number	Description	Fiber Type	Length
MPO Data Center Trunk Cables	<a href="#">106225-0120</a>	MPO (F)-to- MPO (F) Trunk Cable 12F	SM	1.0m
	<a href="#">106225-0121</a>			3.0m
	<a href="#">106225-0122</a>			5.0m
	<a href="#">106225-0123</a>			10.0m
	<a href="#">106225-0124</a>			15.0m
	<a href="#">106225-0100</a>		OM3	1.0m
	<a href="#">106225-0101</a>			3.0m
	<a href="#">106225-0102</a>			5.0m
	<a href="#">106225-0103</a>			10.0m
	<a href="#">106225-0104</a>			15.0m

[www.molex.com](http://www.molex.com)