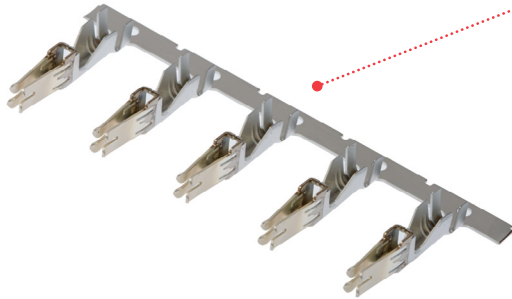


Mini-Fit Sr. Power Connectors



Mini-Fit Sr. Power Connectors are compact and support up to a 50.0A current rating with superb electrical reliability

Features and Benefits



Silver-plated contacts

Offers significant cost savings over gold-plated systems. Avoids the need to manually lubricate Tin-plated versions to mitigate fretting corrosion

High amperage interconnect solution (50.0A)

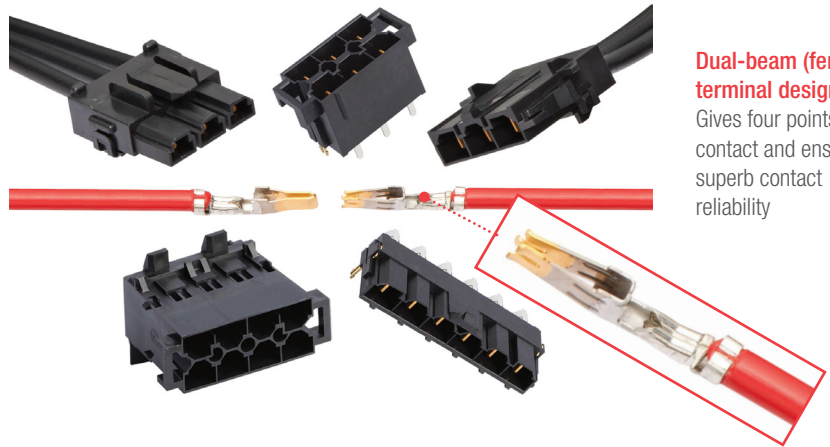
Supports high-power server, telecommunication and industrial equipment requirements

Polarized housing

Prevents connector mis-mating

Terminal position assurance (TPA) retainer required on housings

Prevents terminal back-out



Dual-beam (female) terminal design

Gives four points of contact and ensures superb contact reliability

Applications

Industrial

- Copiers
- Printers
- Power supplies

Consumer

- Washers
- Dryers

Automotive

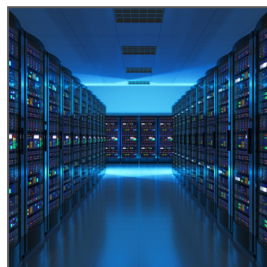
- Two-wheelers
- Commercial vehicles

Telecommunications/Networking

- Servers
- Power supplies

Medical

- X-ray



Servers



Printer and Copier



Home Appliances

Specifications

REFERENCE INFORMATION

Packaging: Housing (Bulk); Terminals (Reels); Headers (Tray or Tube)
 UL File No.: E29179
 CSA File No.: LR19980-555
 RoHS: Yes
 Halogen Free: No
 Glow Wire Compliant: No

ELECTRICAL

Voltage (max.): 600V AC/DC
 Current (max.): 50.0A per contact
 Contact Resistance: 1.0 milliohm
 Insulation Resistance: 1000 megohm

MECHANICAL

Contact Insertion Force: 0.25kg (min.) and 3kg (max.)
 Contact Retention to Housing (min.): 10.0kg
 Insertion Force to PCB (max.): 3.0kg
 Mating Force (max.): 3.0kg
 Unmating Force (max.): 3.0kg
 Durability (min.): 30 cycles

PHYSICAL

Housing: Black
 Contact: Copper Alloy
 Plating:
 Contact Area — Silver
 Solder Tail Area — Tin
 Underplating — Nickel
 PCB Thickness: 0.062, 0.093, 0.125, 0.25mm
 Operating Temperature: -40 to +105°C

Ordering Information

Series No.	Connector	Circuits	Use With	Poles
42815	Female Terminal, Silver-Plated	N/A	8, 10 to 12, 14 to 16 AWG wire	5-Pole Power
42817	Male Terminal, Silver-Plated	N/A		
42819	Vertical Header, Single-Row	2 to 6	Accommodates 1.57-, 2.36-, 3.18- and 6.35mm-thick PCBs	
42820	Right-Angle Header, Single-Row			

Remarks:

- Dual-row (Series 43915) vertical header and reflow-capable single-row and right-angle variants are available in selected circuit sizes. Please contact our sales person for enquiries on these.
- Molex also supplies Gold-plated terminal version connectors if required. Please contact our sales person for enquiries on these.