

# Temp-Flex Solid-Core Flexible Microwave Cable >

Providing both customized and off-the-shelf cost-effective options, Temp-Flex Solid-Core Flexible Microwave Cable provides a cabling option that delivers excellent performance consistency, high flex life along with smaller bend radius and more phase stability with respect to flexure compared to other cable types

## FEATURES AND ADVANTAGES

### Achieves 70% velocity of propagation (VOP) loss characteristics

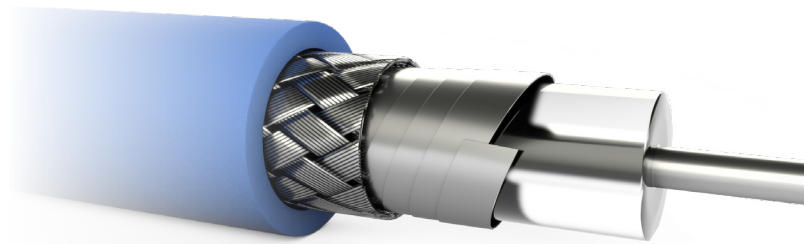
Delivers reliable signal performance and low loss characteristics at high frequencies

### Thermally and mechanically stable at high temperatures

Withstands higher soldering temperatures to provide ease of termination

### Helically wrapped flat wire shield with round or flat braid

Provides flexible alternative to Semi-Rigid Cable



### Extruded fluoropolymer insulation eliminates the phase-knee effect

Delivers linear electrical performance at room temperature

### Solid PFA Extrusion

Provides moisture barrier

### Shielding effectiveness better than 100 dB at high frequencies

Offers high RF noise immunity and low EMI

### Tight impedance control +/- 1 Ohm

Achieves superior RF performance at high frequencies

### Standard offering 047, 086 and 141 shield OD

Offers lightweight, highly flexible construction options

# Temp-Flex Solid-Core Flexible Microwave Cable >

## MARKETS AND APPLICATIONS

### Data Center Solutions and Telecommunications/Networking

Test and measurement

### Medical

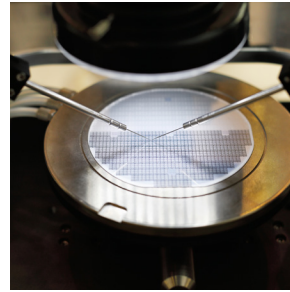
Imaging equipment  
Patient monitors  
Surgical equipment/devices  
Ultrasound equipment  
Endoscopy devices  
Catheters

### Aerospace and Defense

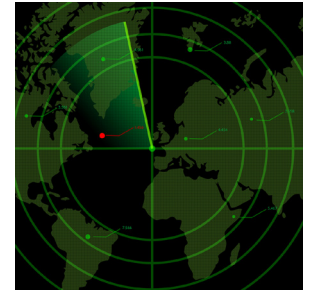
Radar  
SATCOM  
Electronic warfare  
Data centers  
Microwave/RF communications



Endoscope



DUT



Radar

## SPECIFICATIONS

### Reference Information

Packaging: 304.8mm (12-inch) Reels  
UL File No.: E61522, Style: 1354  
Mates With: High-frequency RF Connectors  
(SMA, SMP, SMPM, 2.92mm, 2.4mm)  
Use With: RF Connectors  
Designed In: Inches  
RoHS: Yes

### Construction Custom Options Available

Center Conductor: 29 to 19 AWG, Solid or stranded Silver-plated Copper  
Dielectric: PFA (Fluoropolymer)  
Shield: Helically wrapped flat-wire shield with round or flat braid  
Jacket Material: FEP, Polyurethane, Other

### Electrical

Impedance: 50 Ohms  $\pm 1$   
Nominal Time Delay: 4.77 ns/m (1.455 ns/ft)  
(Construction Dependent)  
Time-Delay Tolerance:  
 $\pm 3.038$  ps/m ( $\pm 10$  ps/ft) Typical  
Insertion Loss:  
Dependent on Specific Order Number  
Cutoff Frequency: Dependent on Specific Order Number  
Shielding Effectiveness: > 100 dB

### Physical

Fire Resistance: V-0 (UL 1351)  
Operating Temperature  
FEP: -65 to +165°C  
Polyurethane: -30 to +165°C

[www.molex.com/link/tempflexiblemw cable.html](http://www.molex.com/link/tempflexiblemw cable.html)