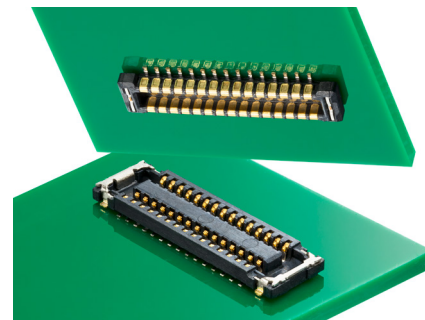


SlimStack Board-to-Board Connectors, 0.40mm Pitch, B8 Series

molex

0.40mm pitch, 0.80mm height, SlimStack B8 connectors with CleanPoint contact design have robust features that remove contaminants and prevent damage when subjected to harsh handling.

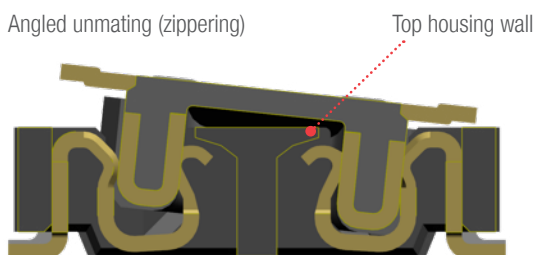
As future devices continue to increase in value and complexity, designers need to stabilize connections to avoid the need for costly rework and/or repair. Building reliability into connector designs for any devices is critical. In the production process of flex-to-board jumpers, flux or dust can sometimes settle on contacts and disrupt signal continuity. Molex's B8 series includes a CleanPoint contact design with a beveled shape that can remove flux and other contaminants to provide a more stable electrical signal.



Features and Advantages

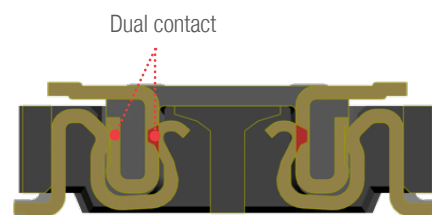
Top Housing Wall

Top housing wall (stopper) prevents the terminal from lifting up due to "zippering" or angled unmating



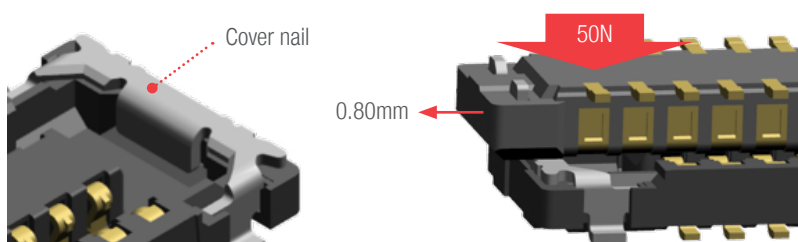
Dual-Contact Design

A dual-contact design on Molex's SlimStack B8 series absorbs drop-shock discontinuity to help guarantee that a stable signal is maintained even when the device is subjected to rough handling



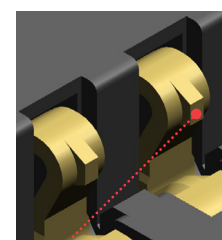
Cover Nail

Cover nail protects the housing from damage during blind mating or angled unmating (zippering). Mating tests on the outer wall of Molex's B8 connectors demonstrate no damage to housing with up to 50N of force and 0.80mm displacement



SlimStack B8 CleanPoint Contact

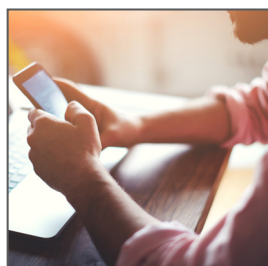
Molex's CleanPoint contact design provides superior electrical reliability and removes foreign materials such as flux



Applications

Mobile Devices

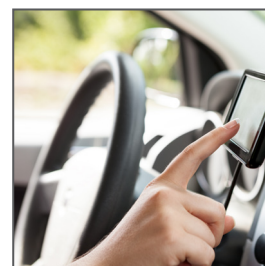
- Smartphones
- Tablet PCs
- Wearable Devices
- Portable Audio
- Portable Navigation Equipment



Smartphone



Wearables



Portable Navigation

SlimStack Board-to-Board Connectors, 0.40mm Pitch, B8 Series



Specifications

REFERENCE INFORMATION

Packaging: Embossed Tape and Reel
 Designed In: Millimeters
 RoHS: Yes
 Halogen Free: Low-Halogen

ELECTRICAL

Voltage (max.): 50V
 Current (max.): 0.3A per circuit
 Contact Resistance (max.): 80 milliohms
 Dielectric Withstanding Voltage: 250V AC
 Insulation Resistance (min.): 100 Megohms

MECHANICAL

Durability (max.): 30 cycles

PHYSICAL

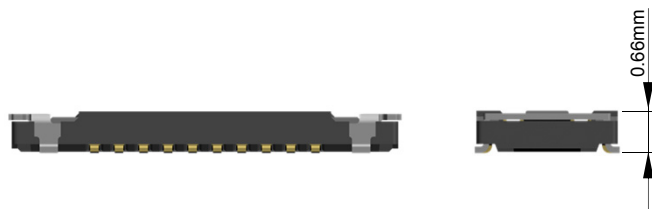
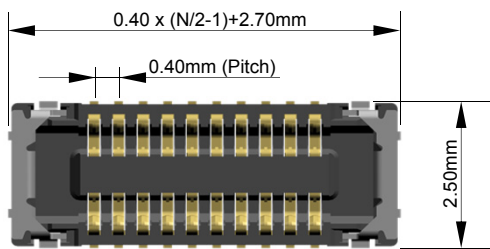
Housing: LCP, UL 94V-0, Black
 Contact: Copper Alloy
 Plating:
 Contact Area – Gold
 Solder Tail Area – Gold
 Underplating – Nickel
 Operating Temperature: -40 to +85°C

Dimensions

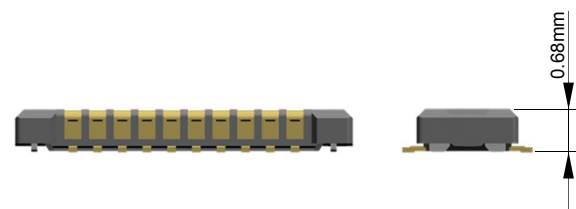
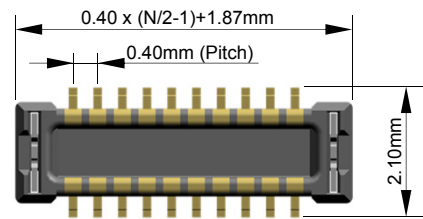
* Refer to drawing for detail dimension

N: Circuit Size

Receptacle



Plug



Ordering Information

| Order No. | | Description | Mated Height (mm) | Mated Width (mm) | Circuits |
|--------------|--------------|---|-------------------|------------------|--------------------------------|
| Receptacle | Plug | | | | |
| 505550 -**20 | 505551 -**20 | Connectors with nail edge inside housing edge | 0.80 | 2.50 | 10, 16, 20, 24, 30, 34, 40, 50 |

**: Circuit Size

www.molex.com/link/slimstack.html