

# High-Density Optical EMI Shielding Adapters (with internal safety shutters)

**molex**<sup>®</sup>

Delivering streamlined behind-panel routings for MT-based interfaces (MXC, MPO/MTP\*, Prizm MT, HBMT) and eye safety shutters, Molex Optical Electro Magnetic Interference (EMI) Shielding Adapters are ideal for data communications and networking applications that require I/O density

## Features and Benefits

### Options available:

MPO (MTP\*) front-interface to MPO(MTP\*), Prizm MT or HBMT™ rear-interface

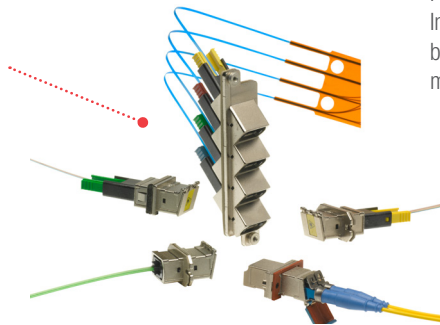
MXC front-interface to Prizm MT or HBMT™ rear interface

(MXC: series 106250 and MPO (MTP\*): series 106114)

Provide flexibility in fiber routing. Reduce space requirements inside the box

### Metal die-cast housings

Provide Electro Magnetic Interference (EMI) protection



### Ceramic or phosphor bronze alignment sleeves (where applicable)

Accommodate single-mode (SM) and multi-mode (MM) performance

### Safety shutters included

Provide dust protection, eye safety. Reduce EMI when no connector is installed

### EMI gaskets included

Provide Electro Magnetic Interference (EMI) seal between the adapter and mounting surface

### Screw- and snap-mount styles available

Provide mounting flexibility

### Multi-port options

Ease space constraints on panel and increase ports within an envelope

### Single- and multi-port adapter design (accepts one or four connectors)

Provides for design flexibility



- A. MXC to Prizm MT or HBMT™ 1 Port Adapter
- B. MXC to Prizm MT or HBMT™ 15 Port Adapter
- C. MXC to Prizm MT or HBMT™ 6 Port Adapter
- D. MXC to Prizm MT or HBMT™ 4 Port (Quad) Adapter
- E. MXC to Prizm MT or HBMT™ 8 Port Adapter



- A. MPO (MTP\*) to MPO, MT or HBMT™ 1 Port Adapter
- B. MPO (MTP\*) to MPO, MT or HBMT™ 15 Port Adapter
- C. MPO (MTP\*) to MPO, MT or HBMT™ 6 Port Adapter
- D. MPO (MTP\*) to MPO, MT or HBMT™ 4 Port (Quad) Adapter
- E. MPO (MTP\*) to MPO, MT or HBMT™ 45° Quad Adapter
- F. MPO (MTP\*) to MPO, MT or HBMT™ 8 Port Adapter

## Applications

### Telecommunication

- Data Centers
- Hubs
- Servers
- Routers

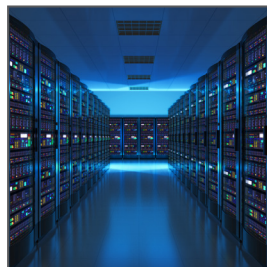
### Industrial

- Test equipment

### Aerospace/Defense

### Data/Storage

- Gigabit Ethernet testing equipment



High-End Servers

# High-Density Optical EMI Shielding Adapters (with internal safety shutters)



## Specifications

### REFERENCE INFORMATION

Packaging: MTP tray, LC bag  
 Mates With: MPO (MTP\*), HBMT  
 Use With: Optical Cable Assemblies and FlexPlane™ Optical Circuitry  
 Designed In: Millimeters

RoHS: Yes  
 Halogen Free: Yes

### MECHANICAL

Durability (min.): 200-mating cycle

### PHYSICAL

Housing: Metal (Zinc) for EMI versions  
 Plating: Electro-less Nickel  
 Operating Temperature: -40 to +85°C

## Ordering Information

### MPO (MTP\*)-to-Prizm MT, -MPO (MTP\*), -HBMT Adapters

Order No.	Front Interface	Back (rear) Interface	Internal Safety Shutters	No. of Ports	MPO Key Orientation	Mounting Method	Mounting Orientation
106114-1524	MPO (MTP*)	MT	Y	4	Up/Up	Screw	Straight
106114-1525				6			
106114-1526				8			
106114-1527				15			
106114-3300	MPO (MTP*)	MPO (MTP*)	Y	4	Up/Down	Screw	45°
106114-1596				6	Up/Up		Straight
106114-1597				8			
106114-1553				15			
106114-1518	MPO (MTP*)	HBMT	Y	4	Up/Up	Screw	Straight
106114-1519				6			
106114-1521				8			
106114-1522				15			

### MPO (MTP\*)-to-MT and HBMT™ Adapters

Order No.	Front Interface	Back Interface	Shutter	Ports	IP67 Sealed Gasket	Mounting Method
106114-1150	MPO (MTP*)	MT	Yes	Simplex	No	Screw Mount
106114-1160						Staggered Screw Mount
106114-1510		HBMT™ Clip				Screw Mount
106114-1520						Snap Mount
106114-1530				Quad		
106127-0100	LC Duplex Ruggedized	LC Duplex Ruggedized, Ceramic Alignment sleeve	Latching	Duplex	Yes	Screw Mount
106127-0110		LC Duplex Ruggedized, Phosphor Bronze Alignment Sleeve				

# High-Density Optical EMI Shielding Adapters (with internal safety shutters)



## Ordering Information

### LC EMI Adapters

Series No.	Back Interface	Mount Style	Mount Angle	Shutter	Mounting Method
106115	Duplex	Screw	45°	One Side	Front
		Snap			
		Screw	Straight	None	
		Snap		One Side	
				Two Sides	
				None	
				One Side	
Two Sides					
Single Screw	45°	One Side	Rear		
106123	Quad		Snap	Straight	Front
106127	Duplex	Screw			

### MXC-to-Prizm MT and -HBMT™ Adapters

Series No.	Front Interface	Back Interface	Shutter	No. of Ports	IP67 Sealed Gasket	Mounting Method
106250	MXC	Prizm MT	Yes	1, 4, 6, 8, 15	No	Screw Mount
		HBMT™ Clip				

### MPO EMI Adapters

Order No.	Cable Type	Mount Style	Mount Angle	Shutter	Mount From
106114-1100	Simplex	Screw	Straight	One Side	Front
106114-1200		Snap			
106114-3000		Screw	45°		
106114-4000		Snap			
106114-0100		Single Screw			
106114-3200	Quad	Screw		None	Rear

### SC EMI Adapters

Series No.	Cable Type	Mount Style	Mount Angle	Shutter	Mount From
106116	Simplex	Screw	Straight	One Side	Front
		Snap			Rear
		Screw	45°		
	SC Duplex EMI Adapter	Screw	Straight	Snap-On	Front

\*MTP is a registered trademark of US Conec, Inc. NOTE: MTP and MPO are synonymous connectors. Molex prefers to market MPO in an effort to not cross-promote MTP, however; MTP and MPO both have strong brand recognition, thus we provide both market names

[www.molex.com/product/emiadapters.html](http://www.molex.com/product/emiadapters.html)